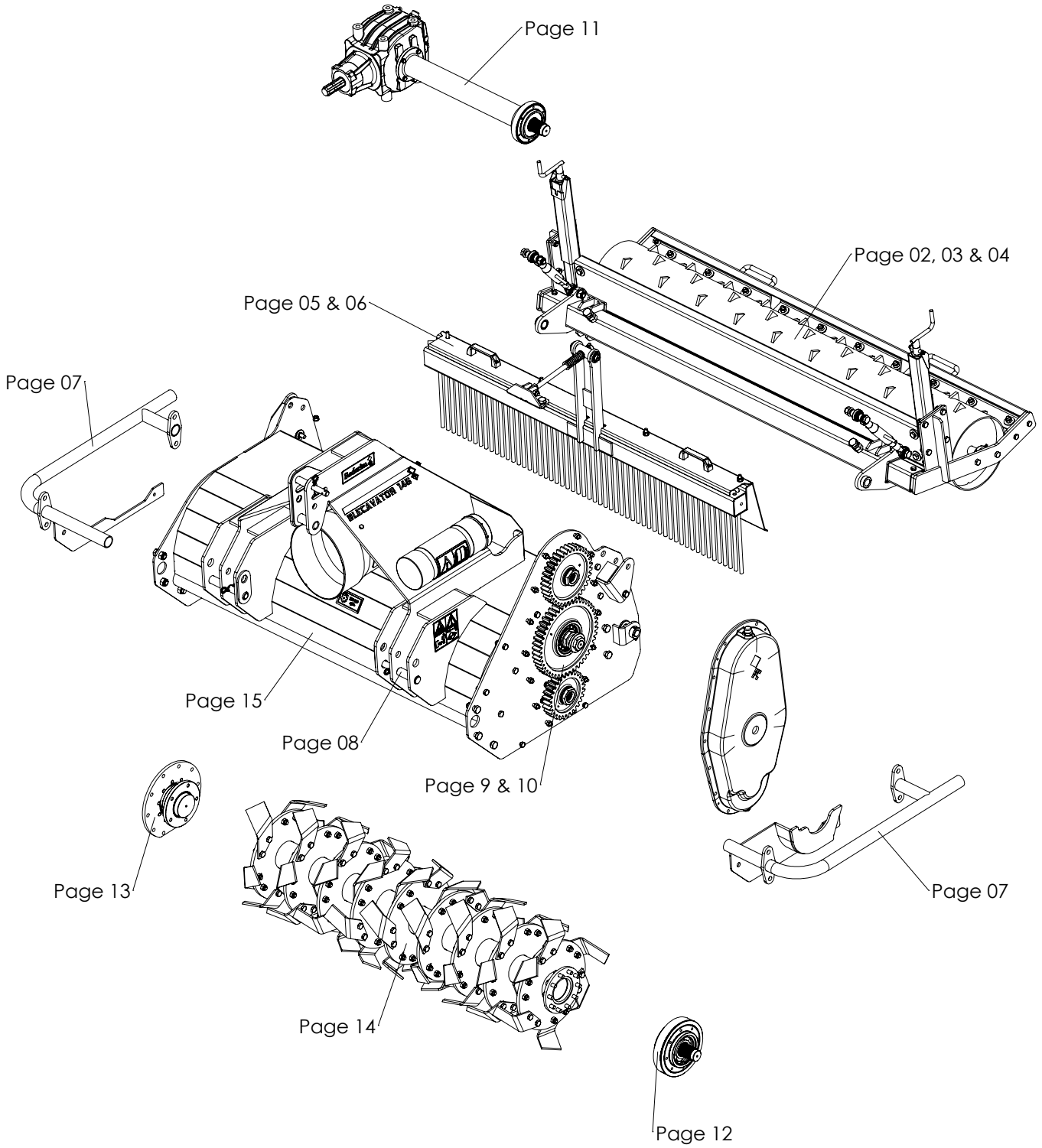
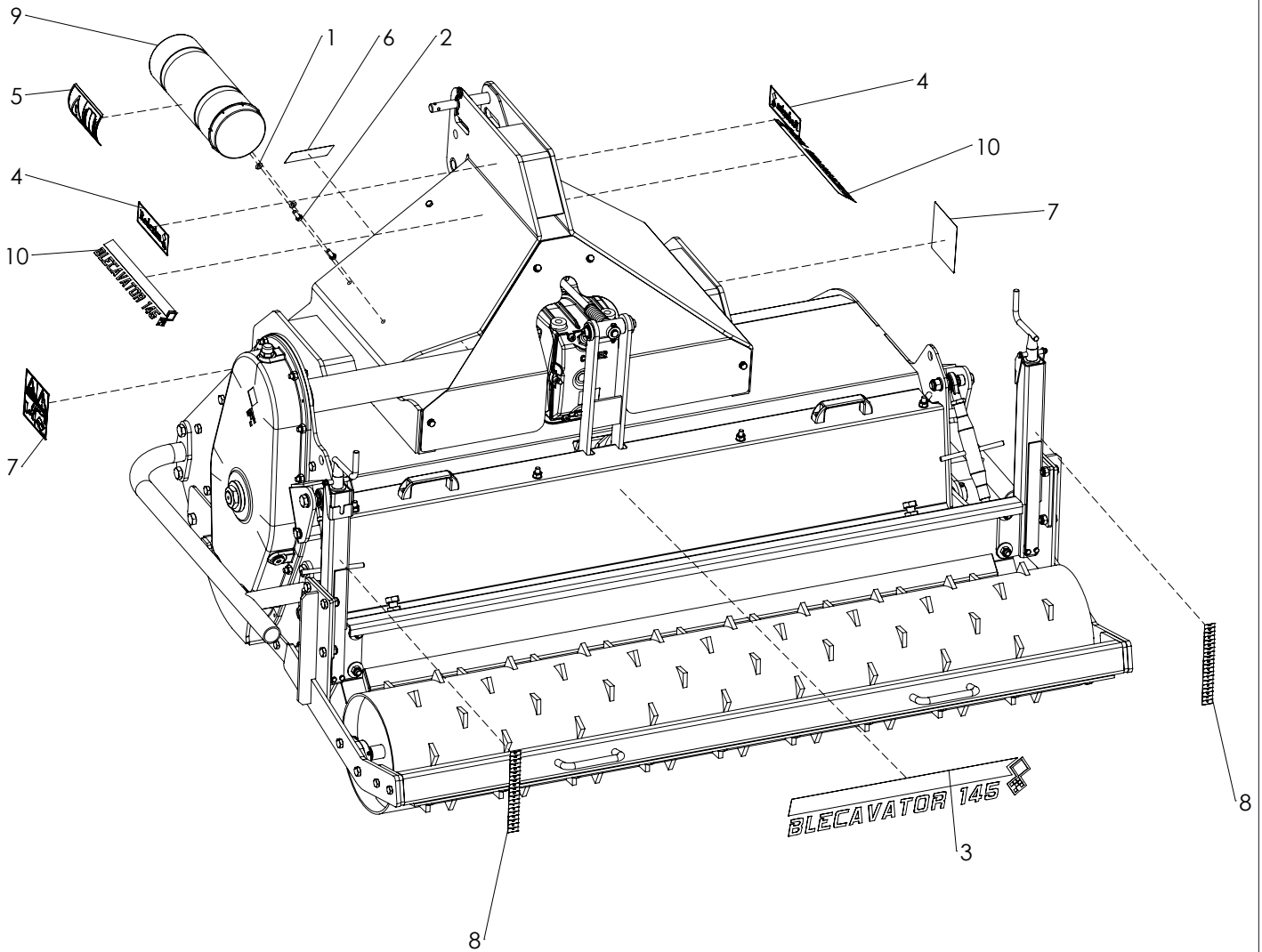


# ***BLECAVATOR 145-210***

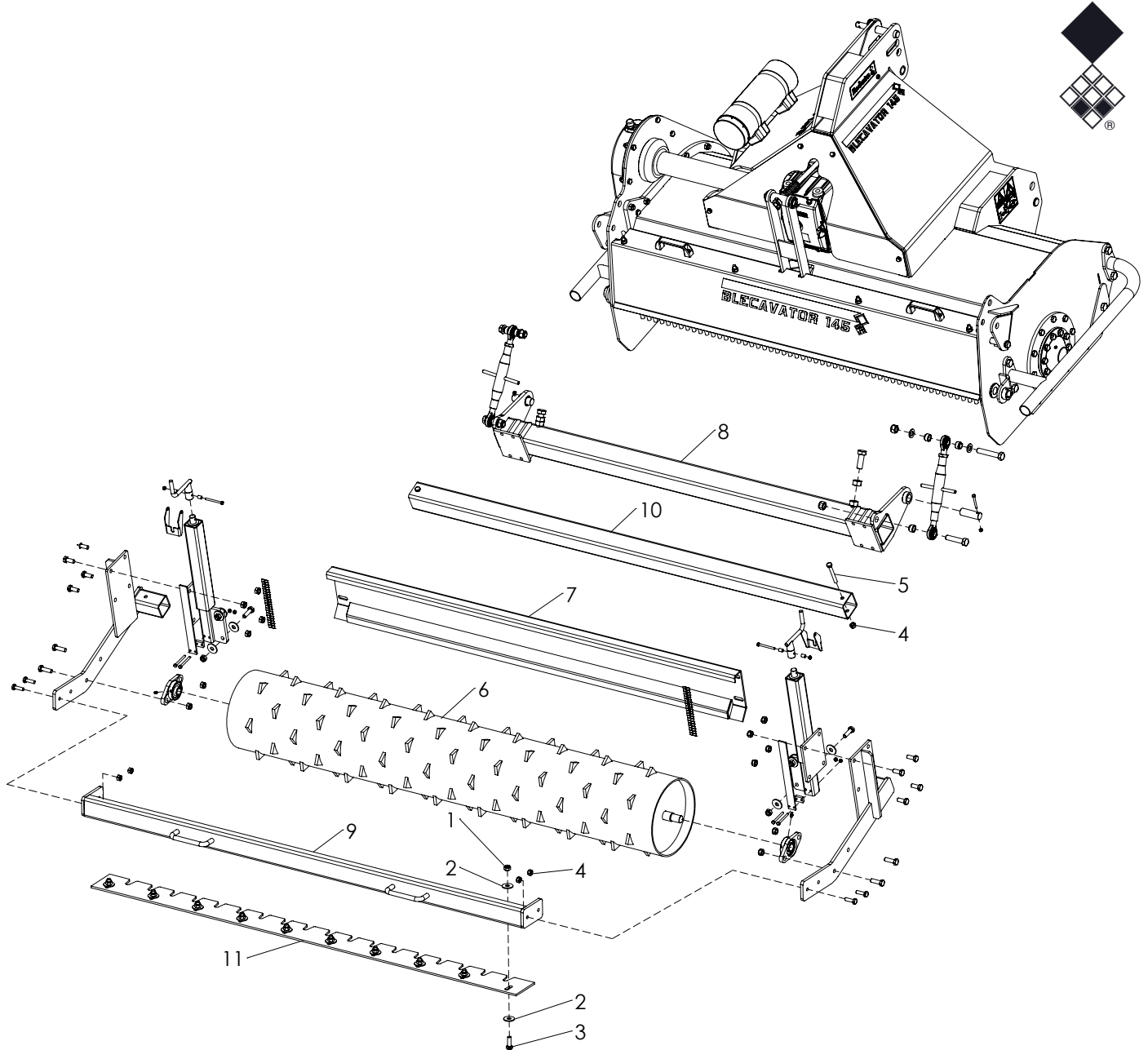


Version: 2440

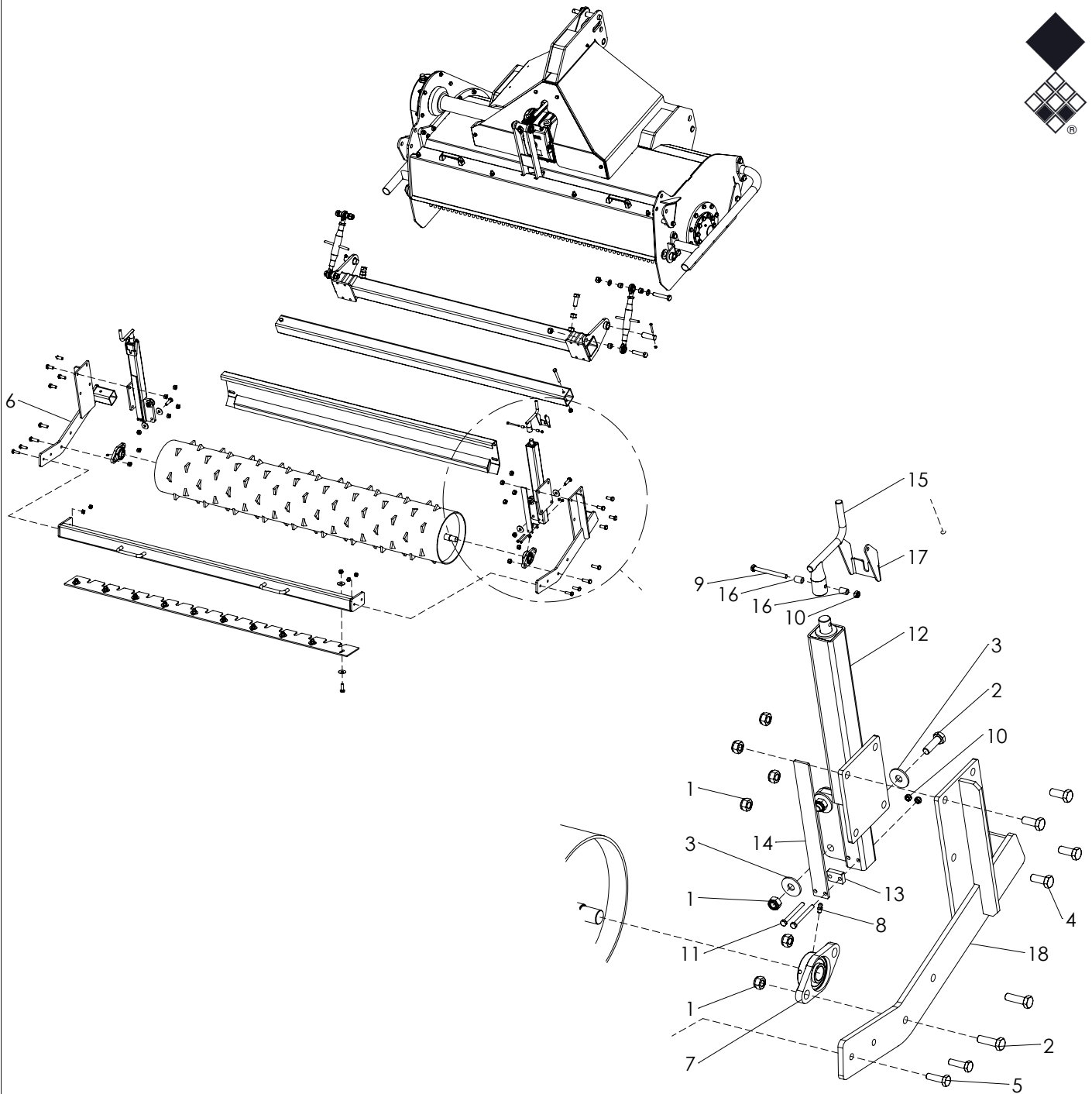




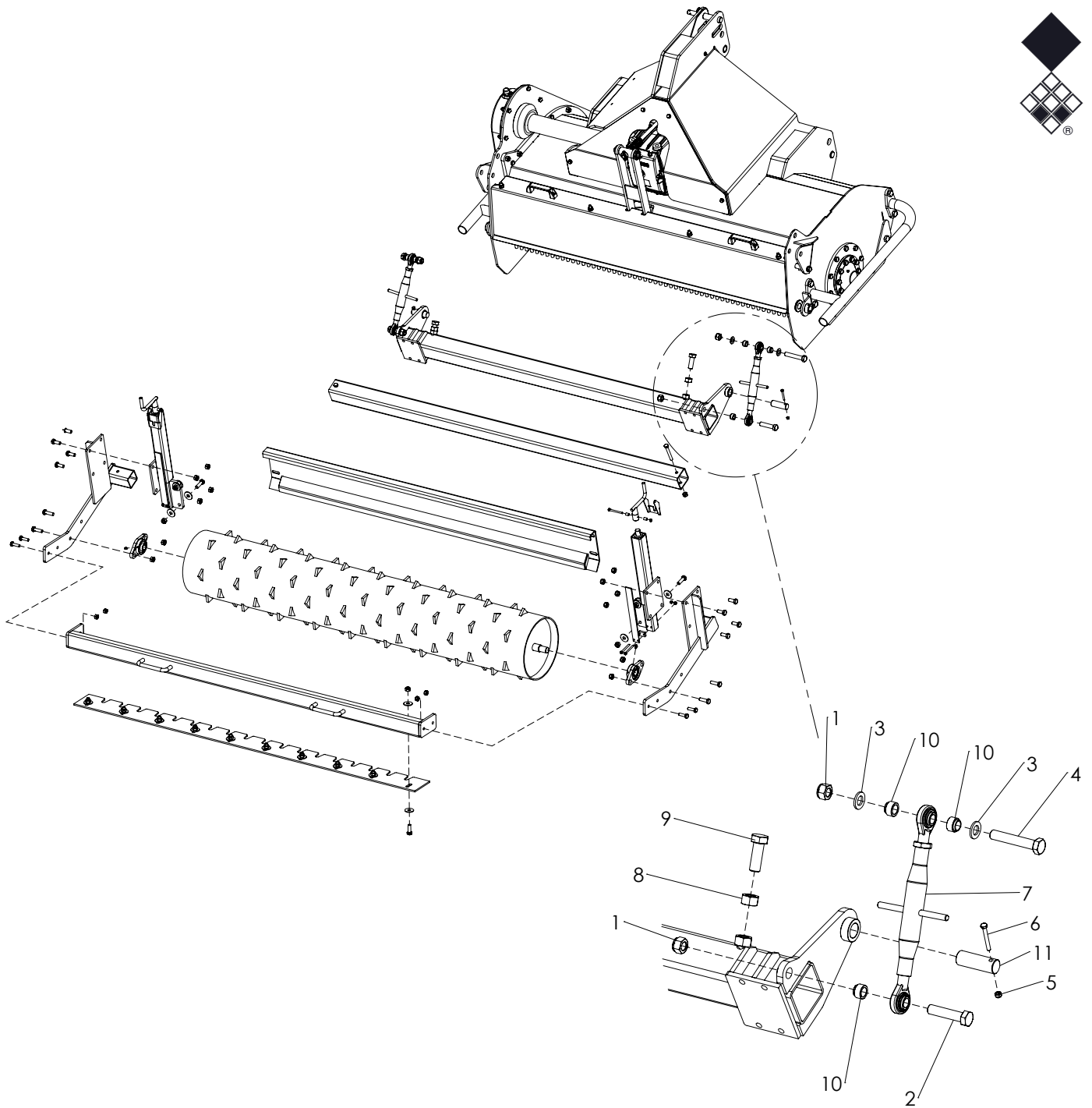
ITEM	PART NUMBER	DESCRIPTION	REMARKS	QUA 145	QUA 210
1	864.080.030	Washer M8 - ISO 7089		6	6
2	804.080.200	Bolt M8 x 20 - ISO 4017		6	6
3	952.260.311	Label Blecavator 145 Large		1	0
	952.260.309	Label Blecavator 210 Large		0	1
4	900.260.401	Logo Label		2	2
5	900.280.402	Safety decall manual		1	1
6	900.260.422	Decal PTO 350 540		1	1
7	921.280.402	Safety decall VS		2	2
8	900.260.414	Decal Ruler		2	2
9	444.803.100	Toolbox Complete		1	1
10	952.260.307	Label Blecavator 145		2	0
	952.260.305	Label Blecavator 210		0	2



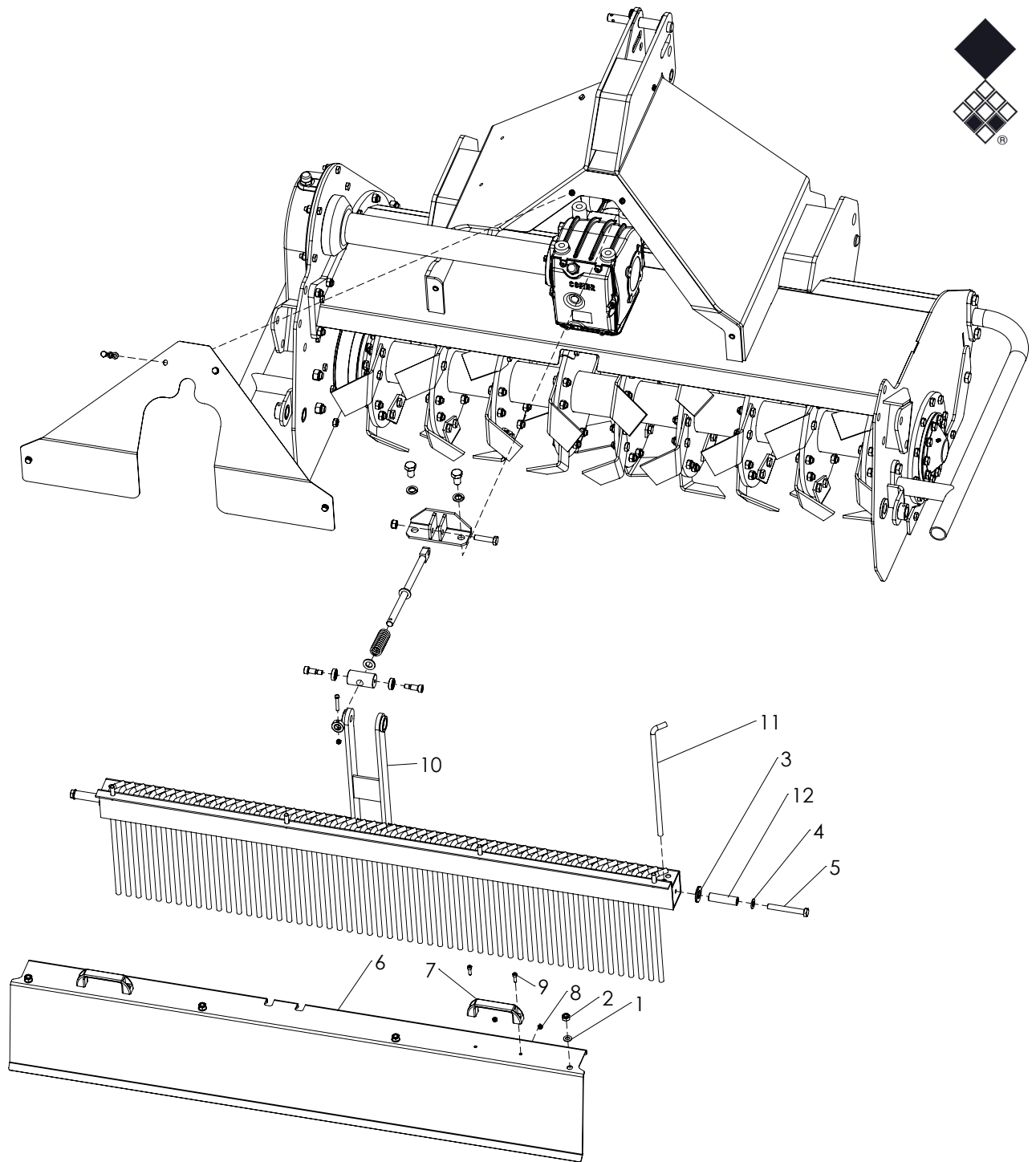
ITEM	PART NUMBER	DESCRIPTION	REMARKS	QUA 145	QUA 210
1	830.120.120	Self Lock Nut M12 - ISO 10511 Class 10		10	14
2	864.120.031	Large washer M12 - DIN 9021		20	28
3	804.120.350	Bolt M12 x 35 - ISO 4017		10	14
4	830.100.100	Self Lock Nut M10 - ISO 10511		6	6
5	802.100.850	Bolt M10 x 85 - ISO 4014		2	2
6	488.178.242	Rear roller		1	0
	488.319.242	Rear roller		0	1
7	468.196.165	Deflector plate		1	0
	468.039.229	Deflector plate		0	1
8	462.232.916	Subframe rear roller		1	0
	462.229.229	Subframe rear roller		0	1
9	470.179.070	Scraper beam		1	0
	470.242.070	Scraper beam		0	1
10	472.701.760	Square tube		1	0
	472.702.400	Square tube		0	1
11	468.069.172	Scraper		1	0
	468.069.117	Scraper		0	2



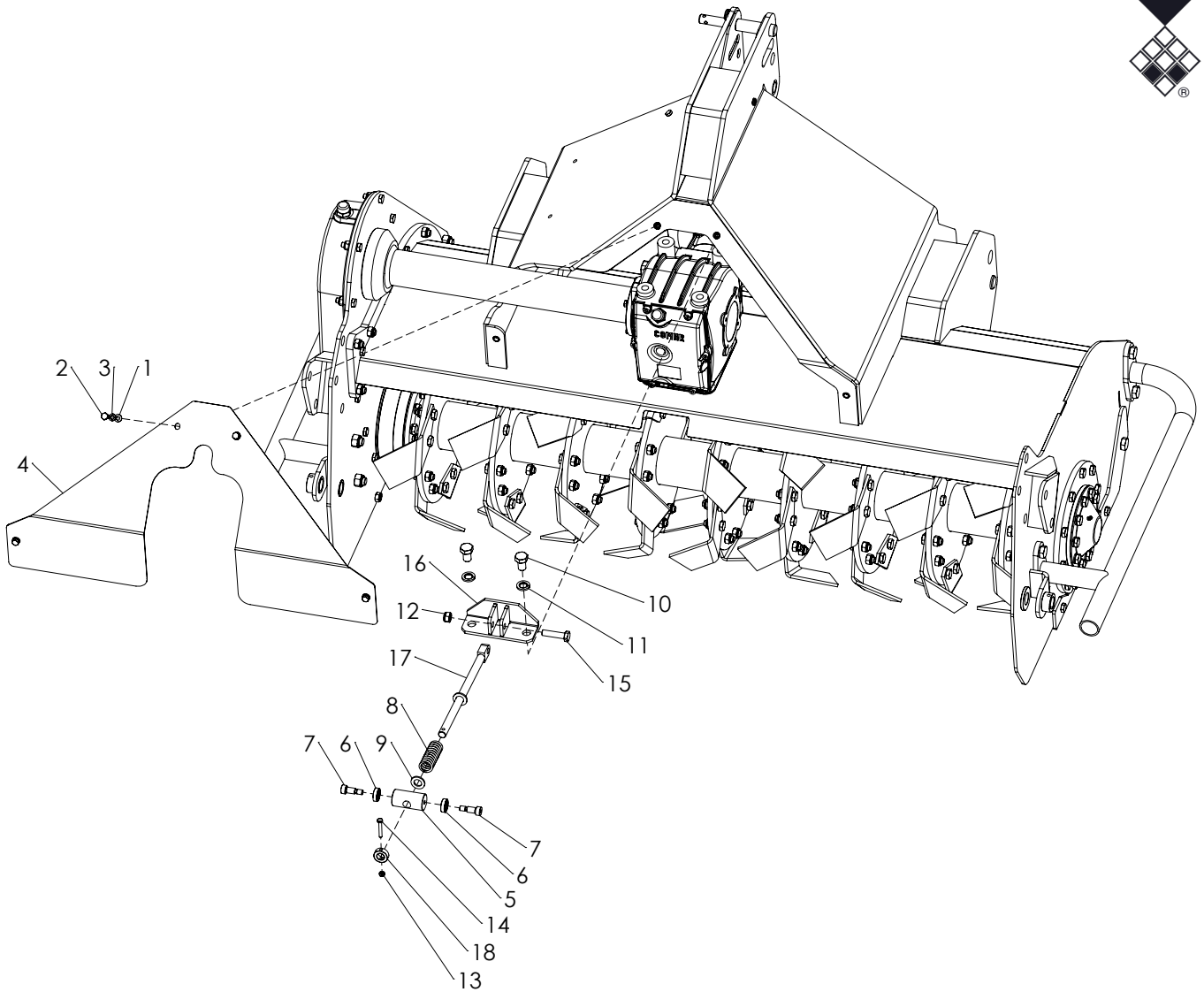
ITEM	PART NUMBER	DESCRIPTION	REMARKS	QUA
1	830.120.120	Self Lock Nut M12 - ISO 10511 Class 10		16
2	804.120.400	Bolt M12 x 40 - ISO 4017		8
3	864.120.031	Large washer M12 - DIN 9021		8
4	804.120.300	Bolt M12 x 30 - ISO 4017		8
5	804.100.350	Bolt M10 x 35 - ISO 4017		4
6	494.190.059	Frame rear roller LH		1
7	742.250.360	Bearing UCFL 205		2
8	880.060.100	Grease nipple M6 DIN 71412A		2
9	802.060.650	Bolt M6 x 65 - ISO 4014		2
10	830.060.060	Self Lock Nut M6 - ISO 10511		6
11	802.060.600	Bolt M6 x 60 - ISO 4014		4
12	460.503.450	Weldment spindle		2
13	464.080.300	Distance Block		2
14	464.042.800	Height Indicator Strip, L= 280		2
15	474.251.162	Lever Jack		2
16	402.070.140	Distance Bush		2
17	468.031.180	Lock Plate		2
18	494.190.058	Frame rear roller RH		1



ITEM	PART NUMBER	DESCRIPTION	REMARKS	QUA
1	830.160.160	Self Lock Nut M16-ISO 10511 Class 10		14
2	802.160.700	Bolt M16 x 70 - ISO 4014 - 10.9		2
3	864.160.030	Washer M16 - ISO 7089		10
4	802.160.900	Bolt M16 x 90 - ISO 4014		2
5	830.060.060	Self Lock Nut M6 - ISO 10511		2
6	802.060.500	Bolt M6 x 50 - ISO 4014		2
7	522.163.000	Toplink Cat. 0 L0=300 Stroke=130mm		2
8	826.180.180	Nut M18 - DIN 934		2
9	804.180.500	Bolt M18 x 50 - ISO 4017		2
10	406.160.230	Distance bush		6
11	424.250.660	Pin		2

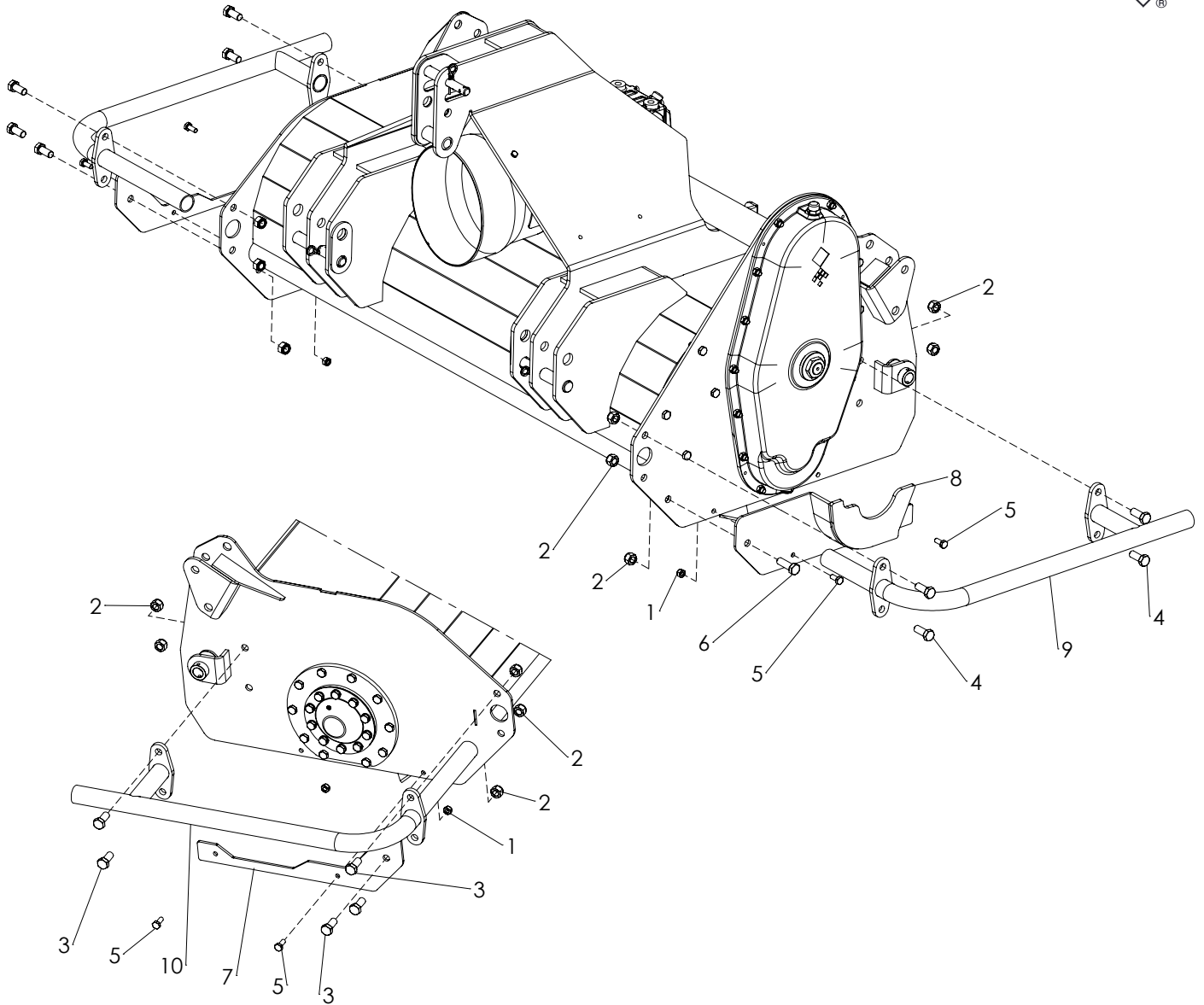


ITEM	PART NUMBER	DESCRIPTION	REMARKS	QUA 145	QUA 210
1	864.100.030	Washer M10 - ISO 7089		4	4
2	830.100.100	Self Lock Nut M10 - ISO 10511		4	4
3	864.240.044	Washer M24 - ISO 7089		2	2
4	864.120.030	Washer M12 - ISO 7089		2	2
5	802.120.950	Bolt M12 x 95 - ISO 4014		2	2
6	456.148.024	Plate		1	0
	456.212.034	Plate		0	1
7	444.151.250	Handle		2	2
8	830.060.060	Self Lock Nut M6 - ISO 10511		4	4
9	814.060.200	Bolt M6 x 20 - DIN 912		4	4
10	494.148.425	Tine bar		1	0
	494.212.425	Tine bar		0	1
11	472.123.970	Tine		56	80
12	402.120.700	Distance bush Ø20/Ø12 L=70		2	2

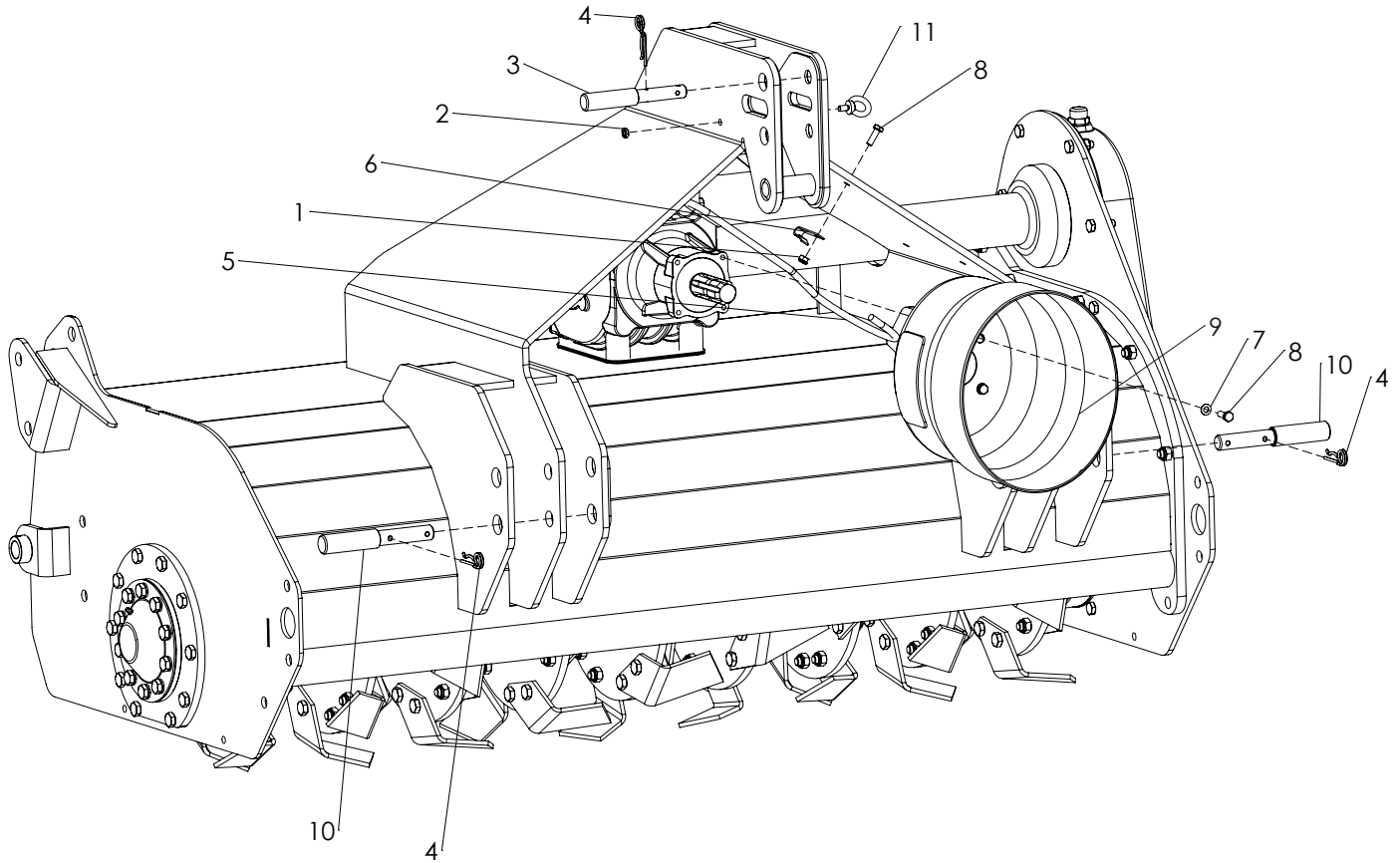


ITEM	PART NUMBER	DESCRIPTION	REMARKS	QUA
1	864.080.030	Washer M8 - ISO 7089		4
2	804.080.200	Bolt M8 x 20 - ISO 4017		4
3	866.080.020	Spring Washer M8 - DIN 127		4
4	456.758.366	Cover plate		1
5	402.350.670	Bush		1
6	4813330	Bearing		2
7	813.120.200	ISO 7379 - M10 - 12x20		2
8	576.200.900	Spring		1
9	864.160.030	Washer M16 - ISO 7089		1
10	804.160.250	Bolt M16 x 25 - ISO 4017		2
11	866.160.020	Spring Washer M16 - DIN 127		2
12	830.120.120	Self Lock Nut M12 - ISO 10511 Class 10		1
13	830.060.060	Self Lock Nut M6 - ISO 10511		1
14	802.060.400	Bolt M6 x 40 - ISO 4014		1
15	802.120.500	Bolt M12 x 50 - ISO 4014 - 10.9		1
16	468.051.202	Bracket		1
17	474.163.180	Shaft		1
18	412.160.110	Washer		1

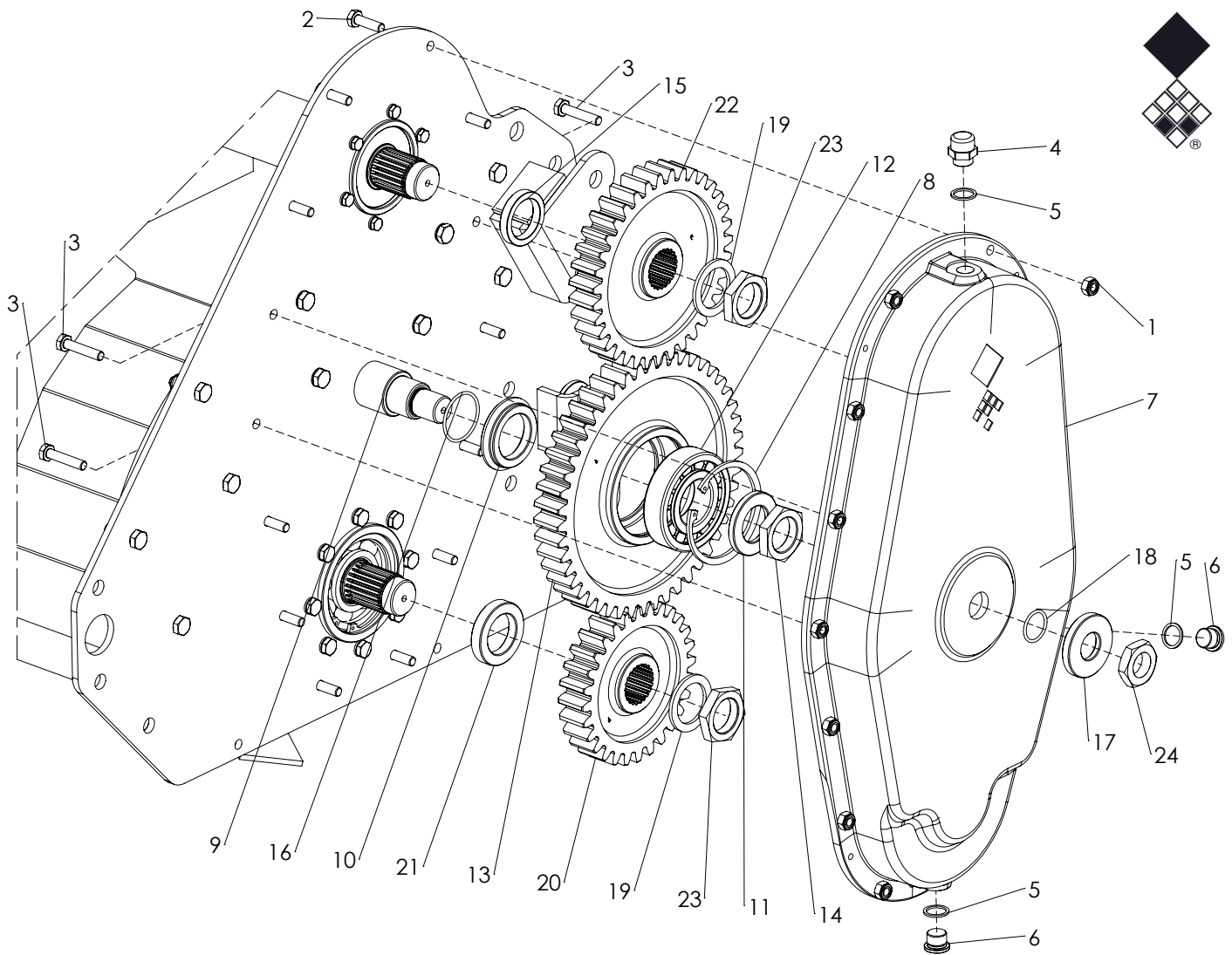




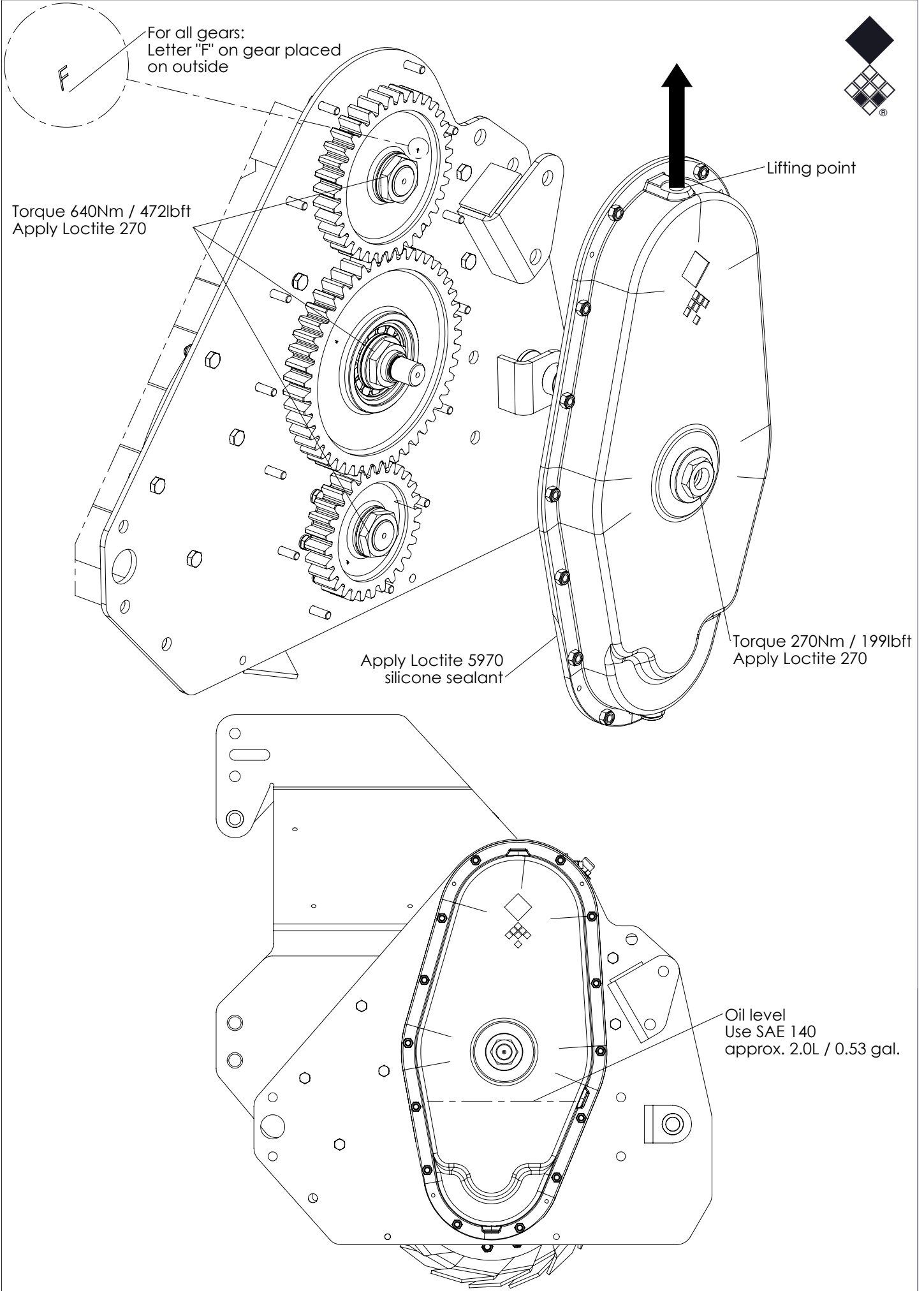
ITEM	PART NUMBER	DESCRIPTION	REMARKS	QUA 145	QUA 210
1	830.100.100	Self Lock Nut M10 - ISO 10511		4	4
2	830.160.160	Self Lock Nut M16-ISO 10511 Class 10		10	10
3	804.160.350	Bolt M16 x 35 - ISO 4017		5	5
4	804.160.402	Bolt M16 x 40 - ISO 4017 Class 10.9		4	4
5	804.100.250	Bolt M10 x 25 - ISO 4017		4	4
6	802.160.500	Bolt M16 x 50 - ISO 4014		1	1
7	468.065.352	Wear strip		1	1
8	470.535.172	Wear protection cover		1	1
9	478.150.832	Barrier		1	0
	478.150.830	Barrier		0	1
10	478.150.830	Barrier		1	1

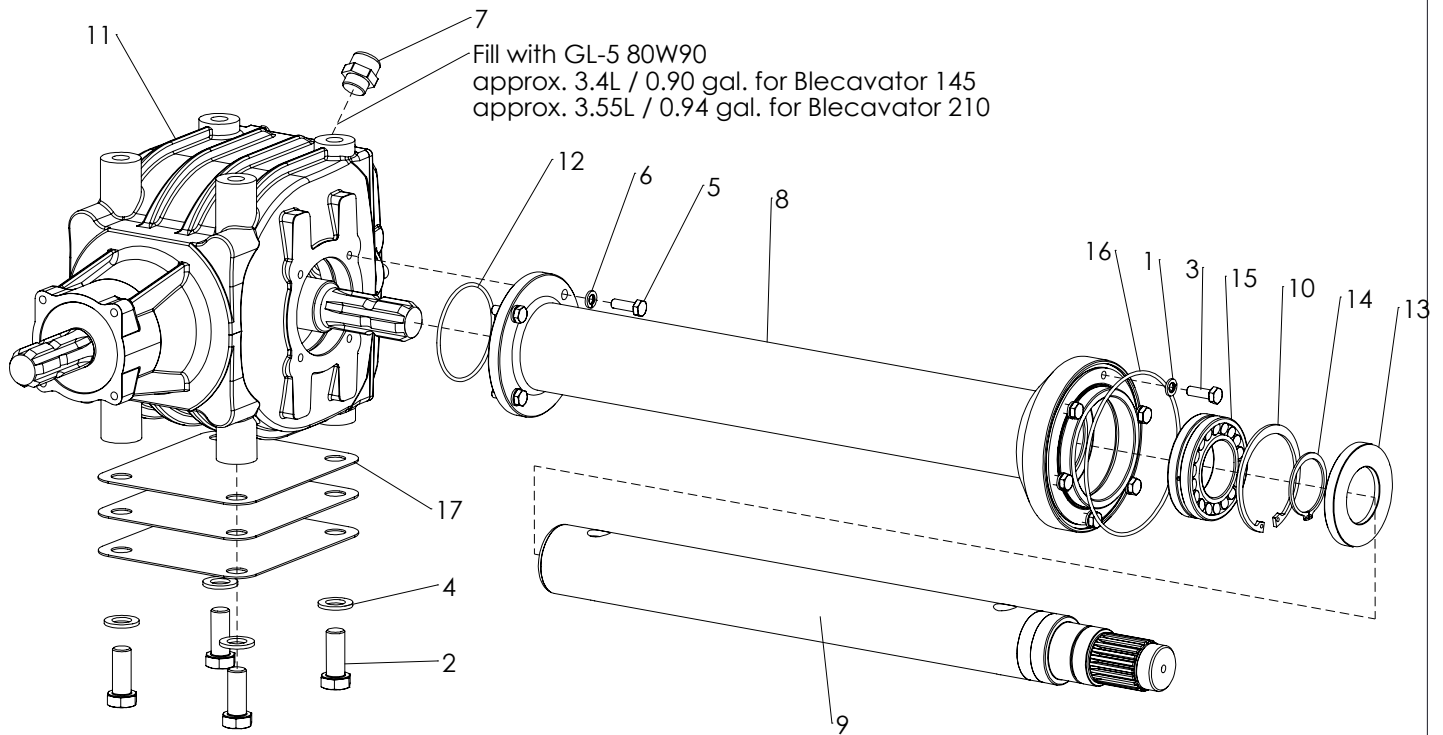


ITEM	PART NUMBER	DESCRIPTION	REMARKS	QUA
1	830.080.080	Self Lock Nut M8 - ISO 10511		1
2	826.100.500	Low Nut M10 - DIN 439		1
3	521.191.600	Top link pin OS		1
4	523.030.750	R-Clip Round 3, DIN 11024		3
5	472.107.100	Hook		1
6	464.020.820	Lock strip		1
7	864.080.030	Washer M8 - ISO 7089		4
8	804.080.250	Bolt M8 x 25 - ISO 4017		5
9	629.275.240	PTO Cover 4xØ10 PD105		1
10	521.221.600	3-point pin		2
11	822.100.362	Lifting Eye Bolt M10 - DIN 580		1

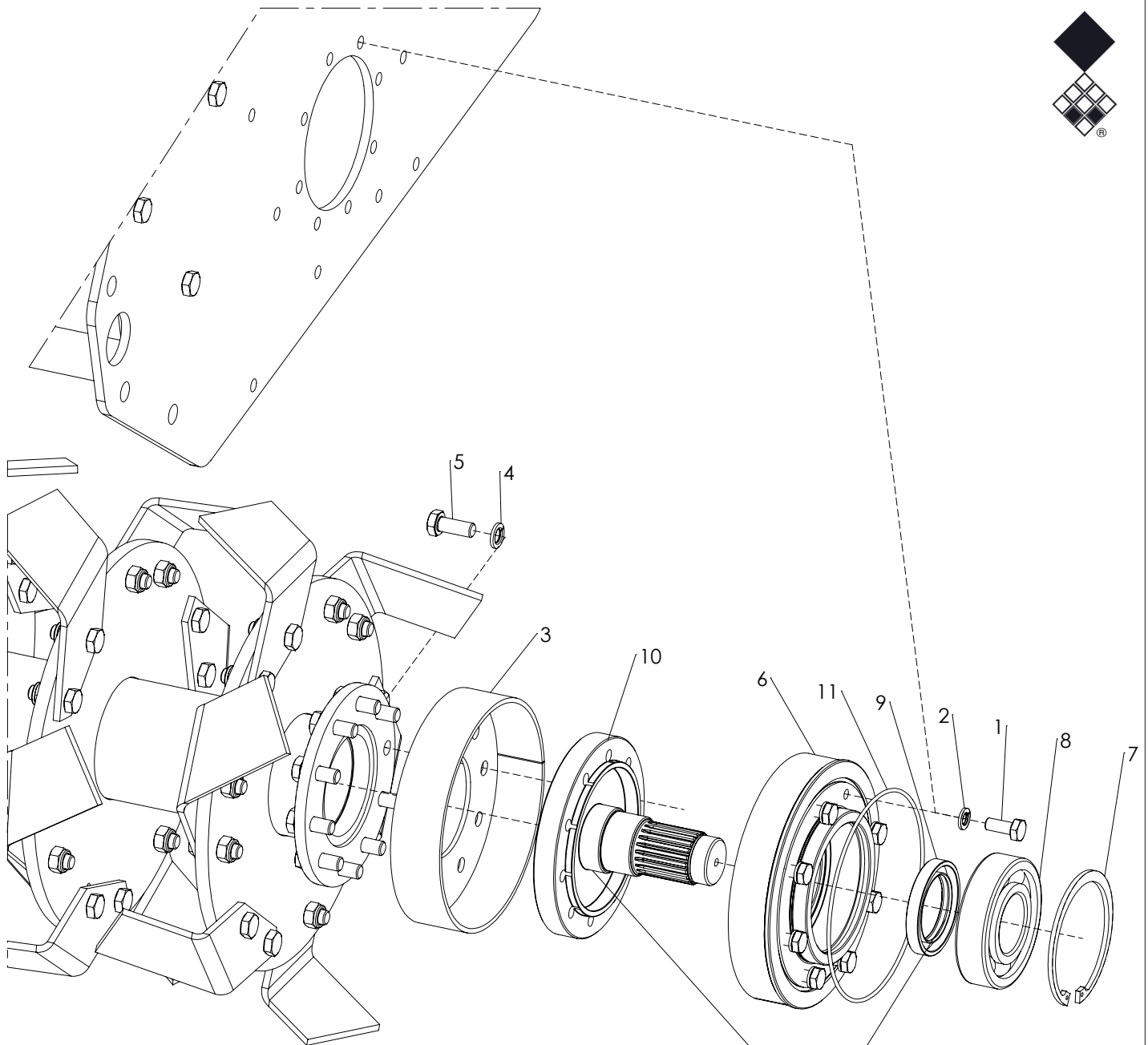


ITEM	PART NUMBER	DESCRIPTION	REMARKS	QUA
1	830.100.100	Self Lock Nut M10 - ISO 10511		14
2	804.100.350	Bolt M10 x 35 - ISO 4017		11
3	802.100.500	Bolt M10 x 50 - ISO 4014		3
4	537.120.300	Breather 1/2"		1
5	874.210.020	Copper washer 1_2		3
6	549.210.200	Blind plug G1/2		2
7	448.746.380	Gear cover		1
8	872.110.400	Circlip D=110 - DIN 472		1
9	488.065.121	Shaft		1
10	406.500.140	Distance bush		1
11	406.410.080	Distance bush		1
12	721.500.270	Cylindrical roller bearing		1
13	432.352.940	Gear 47T, Module 6, b35		1
14	472.120.602	Cranck shaft nut M40x1.5		1
15	406.450.112	Distance bush		1
16	766.490.030	O-Ring Ø49x3		1
17	456.070.010	Washer		1
18	766.300.030	O-Ring Ø30x3		1
19	406.460.030	Washer		2
20	432.351.800	Gear 28T, Module 6, b35		1
21	406.450.142	Distance bush		1
22	432.352.220	Gear 35T, Module 6, b35		1
23	472.120.602	Cranck shaft nut M40x1.5		2
24	844.300.120	Nut M30x2 h=12		1



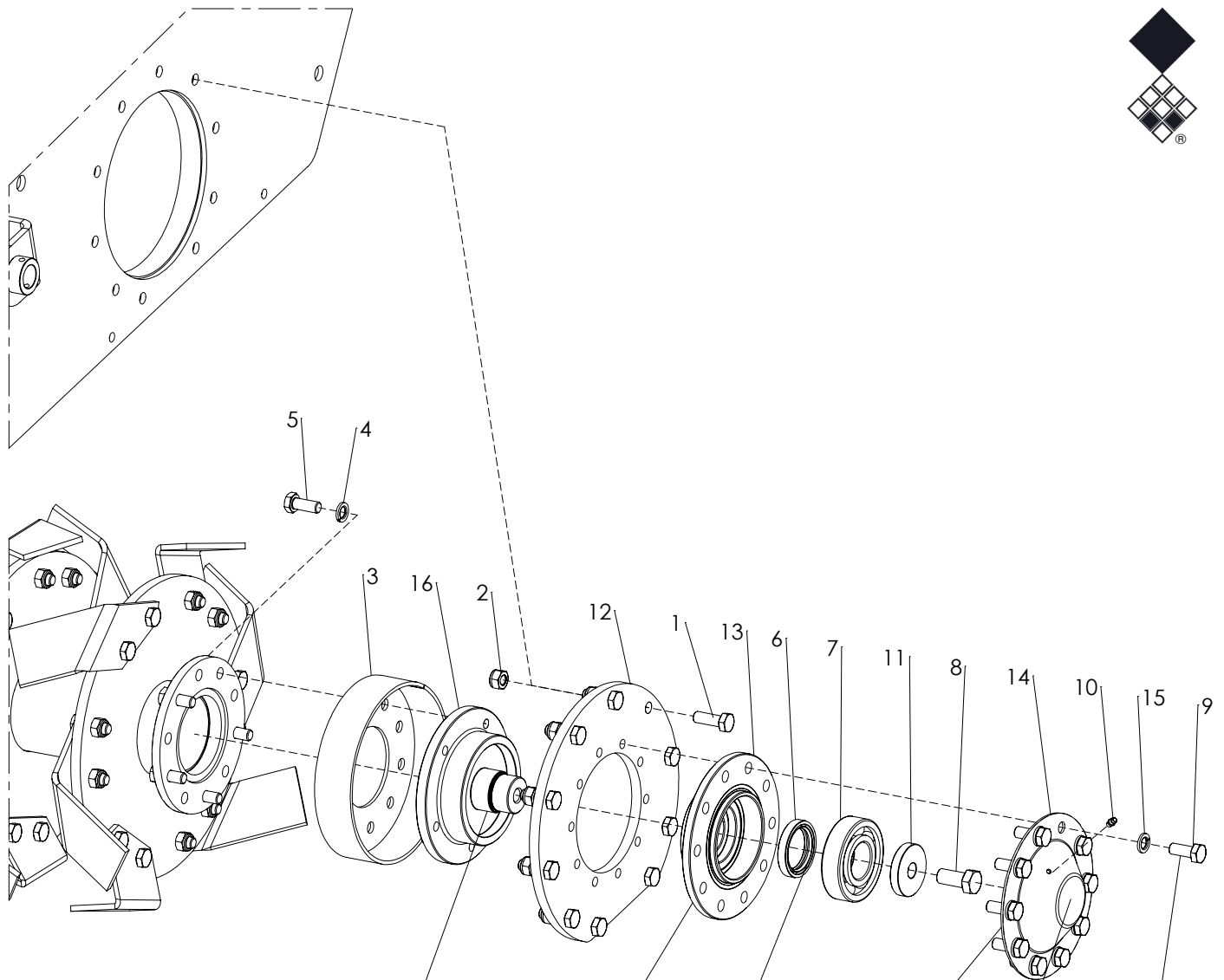


ITEM	PART NUMBER	DESCRIPTION	REMARKS	QUA 145	QUA 210
1	866.080.020	Spring Washer M8 - DIN 127		6	6
2	804.160.402	Bolt M16 x 40 - ISO 4017 Class 10.9		4	4
3	804.080.250	Bolt M8 x 25 - ISO 4017		6	6
4	864.160.030	Washer M16 - ISO 7089		4	4
5	804.080.250	Bolt M8 x 25 - ISO 4017		4	4
6	866.080.020	Spring Washer M8 - DIN 127		4	4
7	537.120.300	Breather 1/2"		1	1
8	478.150.612	Drive shaft tube		1	0
	478.150.931	Drive shaft tube		0	1
9	478.061.633	Drive shaft		1	0
	478.061.952	Drive shaft		0	1
10	872.090.300	Circlip D=90 - DIN 472		1	1
11	622.202.294	Gearbox Comer T-22A 2.42:1		1	1
12	766.800.030	O-Ring Ø80x3		1	1
13	762.500.100	Oil seal 50-90-10		1	1
14	870.050.200	Circlip d=50 - DIN 471		1	1
15	721.500.230	Spherical roller bearing		1	1
16	766.138.030	O-Ring Ø138x3		1	1
17	468.021.908	Shim plate	Used for leveling the gearbox with side drive. Quantity may differ, check your machine	3	3



Use grease (NLGI 2) to mount the seal.

ITEM	PART NUMBER	DESCRIPTION	REMARKS	QUA
1	804.100.250	Bolt M10 x 25 - ISO 4017		8
2	866.100.020	Spring Washer M10 - DIN 127		8
3	470.198.045	Dust cover		1
4	866.120.020	Spring Washer M12 - DIN 127		10
5	804.120.302	Bolt M12 x 30 - ISO 4017 Class 10.9		10
6	470.209.053	Flange weld assy		1
7	872.110.400	Circlip D=110 - DIN 472		1
8	711.500.270	Bearing 6310		1
9	762.550.100	Oil seal 55x80x10mm type CC		1
10	488.170.144	Shaft end		1
11	766.142.030	O-Ring Ø142x3		1



Use grease (NLGI 2) to mount the seal.

Apply loctite 5970 silicone sealant

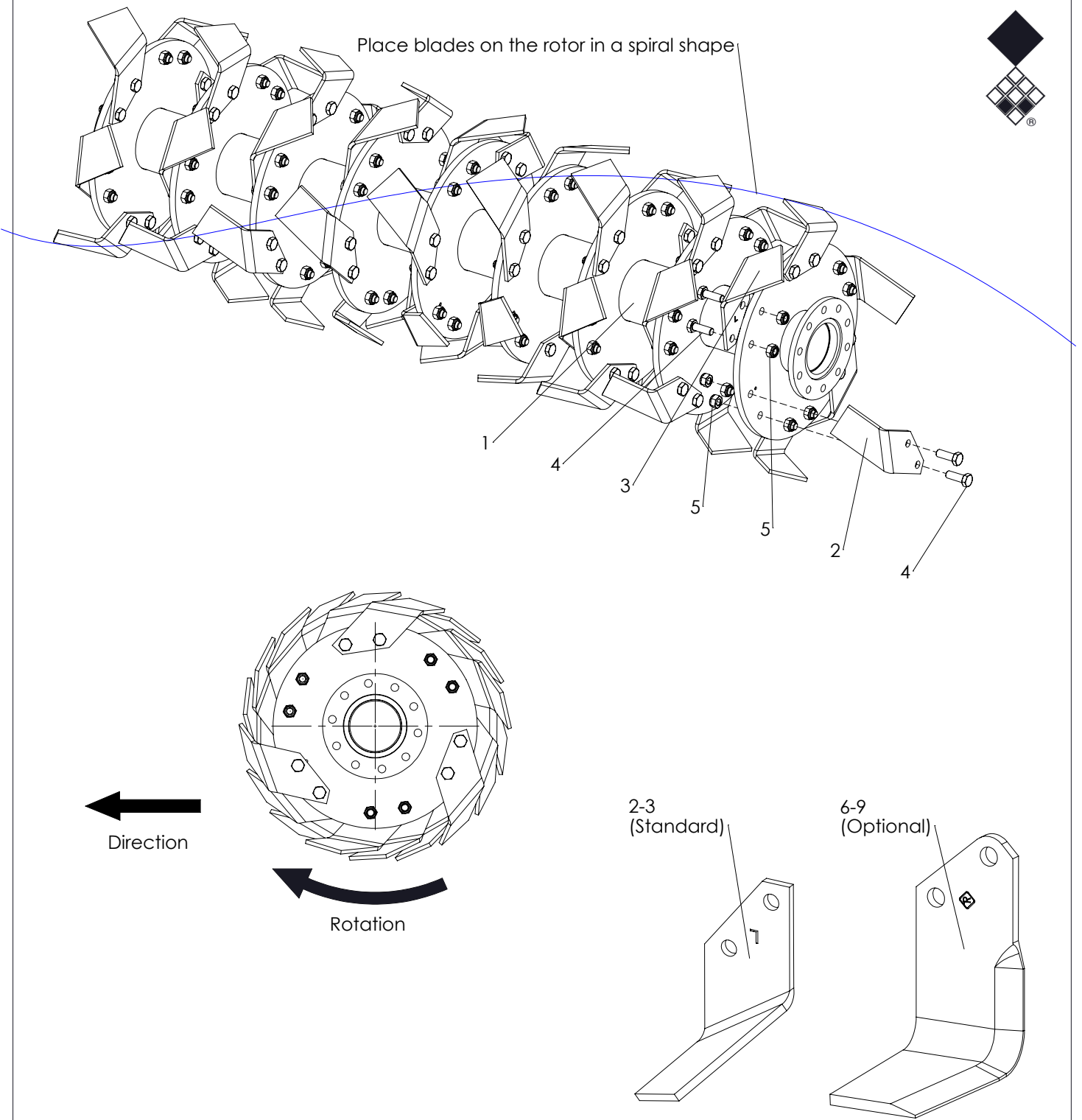
Use grease (NLGI 2) to mount the seal.

Apply loctite 5970 silicone sealant

Apply approx. 40ml / 1.35 floz. NLGI3 grade grease

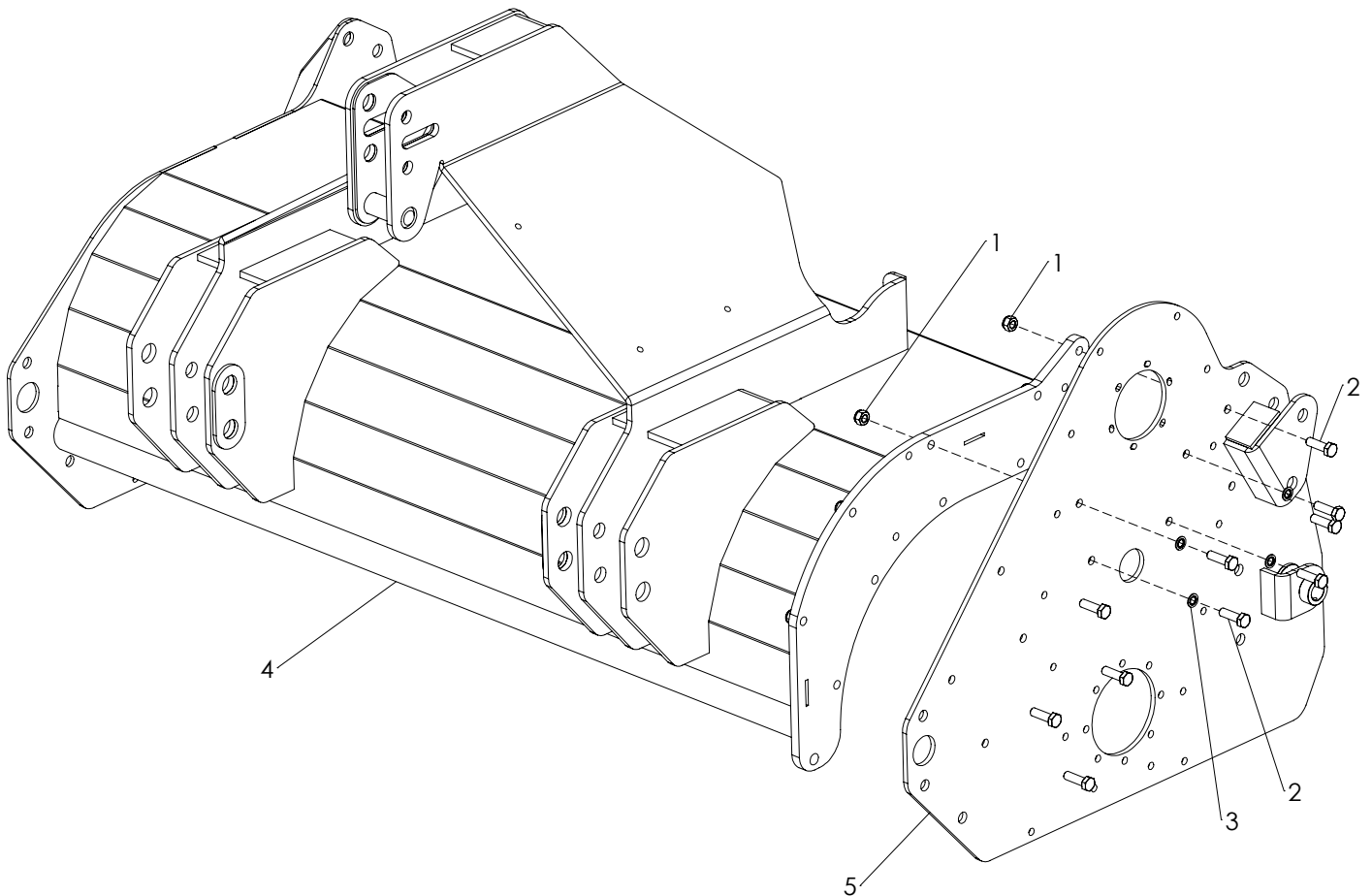
Use threadlocking sealant Loctite 243

ITEM	PART NUMBER	DESCRIPTION	REMARKS	QUA
1	804.120.350	Bolt M12 x 35 - ISO 4017		10
2	830.120.120	Self Lock Nut M12 - ISO 10511 Class 10		10
3	470.198.045	Dust cover		1
4	866.120.020	Spring Washer M12 - DIN 127		5
5	804.120.302	Bolt M12 x 30 - ISO 4017 Class 10.9		5
6	762.450.102	Oil seal 45x62x10mm type CC		1
7	4816980	Bearing 6308		1
8	804.160.350	Bolt M16 x 35 - ISO 4017		1
9	804.120.300	Bolt M12 x 30 - ISO 4017		10
10	880.060.100	Grease nipple M6 DIN 71412A		1
11	410.160.100	Washer		1
12	468.122.802	Flange support		1
13	478.180.044	Flange		1
14	456.180.033	Side cover		1
15	866.120.020	Spring Washer M12 - DIN 127		10
16	488.170.093	Shaft end		1

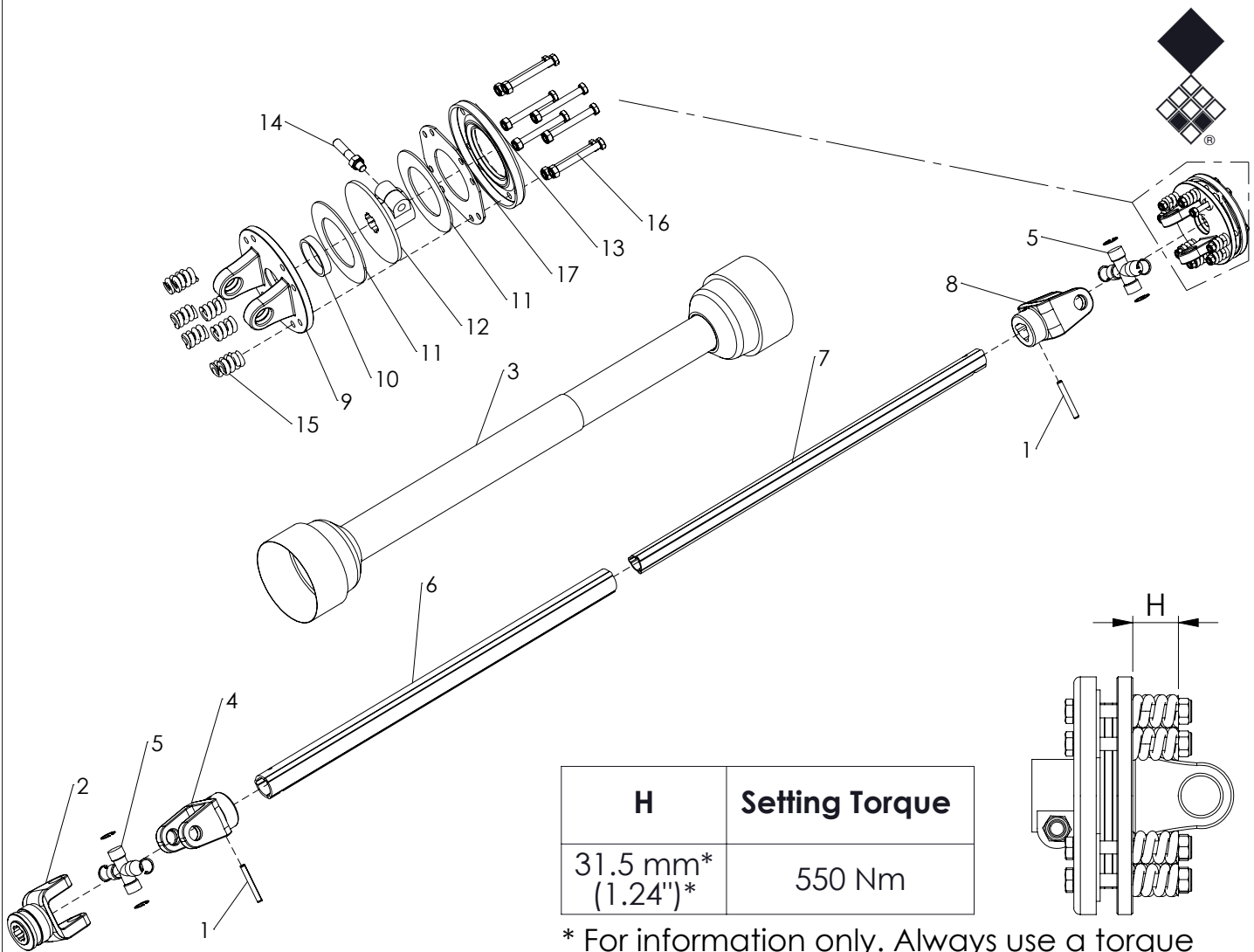


ITEM	PART NUMBER	DESCRIPTION	REMARKS	QUA 145	QUA 210
1	494.139.033	Weldment rotor		1	0
	494.204.033	Weldment rotor		0	1
2	2986040	Stone burier blade RH	Standard, Marked with "R"	27	39
3	2986042	Stone burier blade LH	Standard, Marked with "L"	27	39
4	804.120.350	Bolt M12 x 35 - ISO 4017		108	156
5	830.120.120	Self Lock Nut M12 - ISO 10511 Class 10		108	156
6	351.308.180	Blade Blecavator 8mm Left	Optional	24	36
7	351.308.181	Blade Blecavator 8mm Right short	Optional	3	3
8	351.308.182	Blade Blecavator 8mm Right	Optional	24	36
9	351.308.183	Blade Blecavator 8mm Left short	Optional	3	3





ITEM	PART NUMBER	DESCRIPTION	REMARKS	QUA 145	QUA 210
1	830.120.120	Self Lock Nut M12 - ISO 10511 Class 10		10	10
2	804.120.402	Bolt M12 x 40 - ISO 4017 Class 10.9		10	10
3	769.120.020	Bonded seal ring M12		4	4
4	494.156.093	Frame Blecavator 145		1	0
	494.217.076	Frame Blecavator 210		0	1
5	494.076.065	Weld assy side plate left		1	1



H	Setting Torque
31.5 mm* (1.24")*	550 Nm

\* For information only. Always use a torque test rig to set the correct value.

**ALWAYS** deburr parts when cut  
**MEASURE** correct length of PTO first  
**MAINTAIN** slipclutch every month  
**NEVER USE** PTO over 30 degrees  
**SLIPCLUTCH** always on machine side

ITEM	PART NUMBER	DESCRIPTION	REMARKS	QUA
1	19000018	Outer roll pin		2
2	BEN PT140119	End yoke with quick lock		1
3	BEN PT143249	Safety guard group	Cut to correct length	1
4	BEN PT143666	Outer tube yoke		1
5	BEN PT151242	Universal joint assembled		2
6	BEN PT154926	Tubing cut to size	Cut to correct length	1
7	BEN PT157727	Tubing cut to size	Cut to correct length	1
8	BEN PT158836	Inner tube yoke		1
9	BEN F1B06	Flange yoke		1
10	BEN F060	Bush		1
11	BEN F030/S	Lining ring		2
12	BEN F138	Hub		1
13	BEN F1180	Pressure plate		1
14	BEN 90938	Conic bolt and nut		1
15	BEN F0111	Spring		8
16	BEN F10085	Bolt and nut		8
17	BEN F070	Inner plate		1
	611.601.200	PTO shaft type T-60 tl 1200		
	611.606.100	PTO shaft type T-60 tl 610		