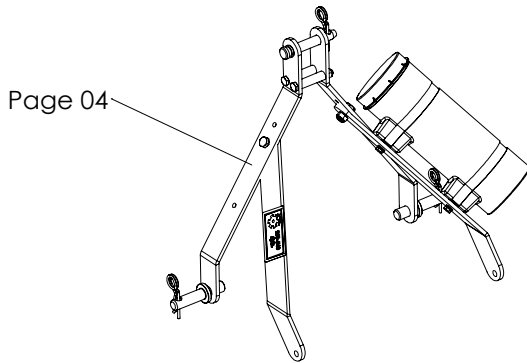


VERTI-CUT 1300

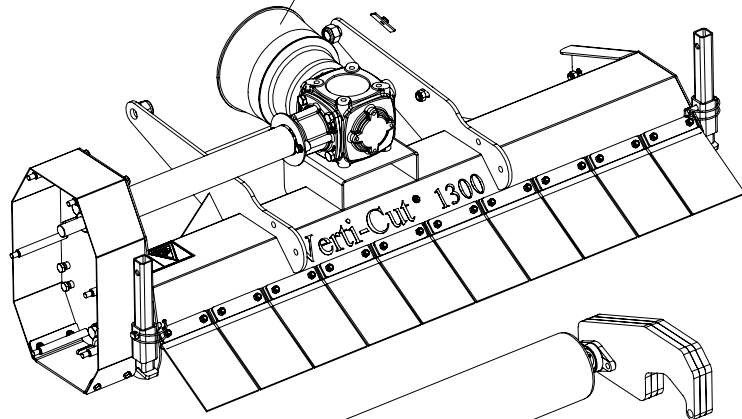


Version 2439

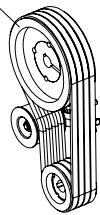
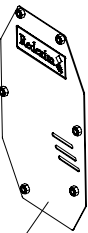


Page 07

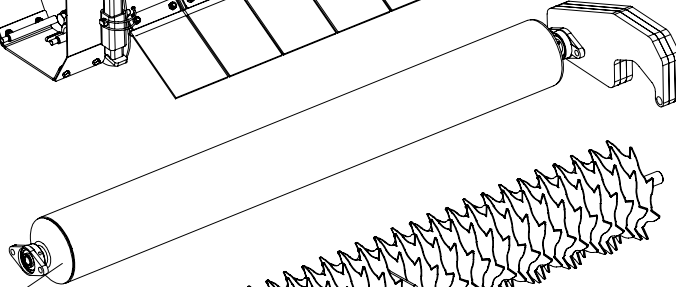
Page 06



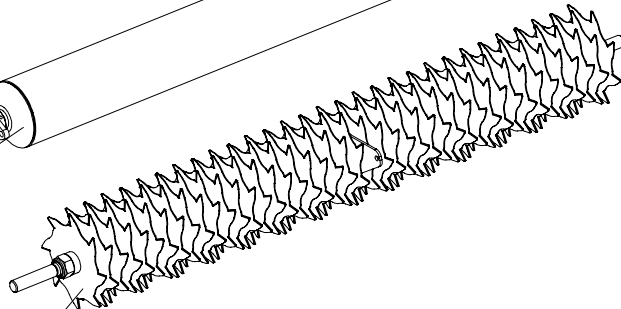
Page 03



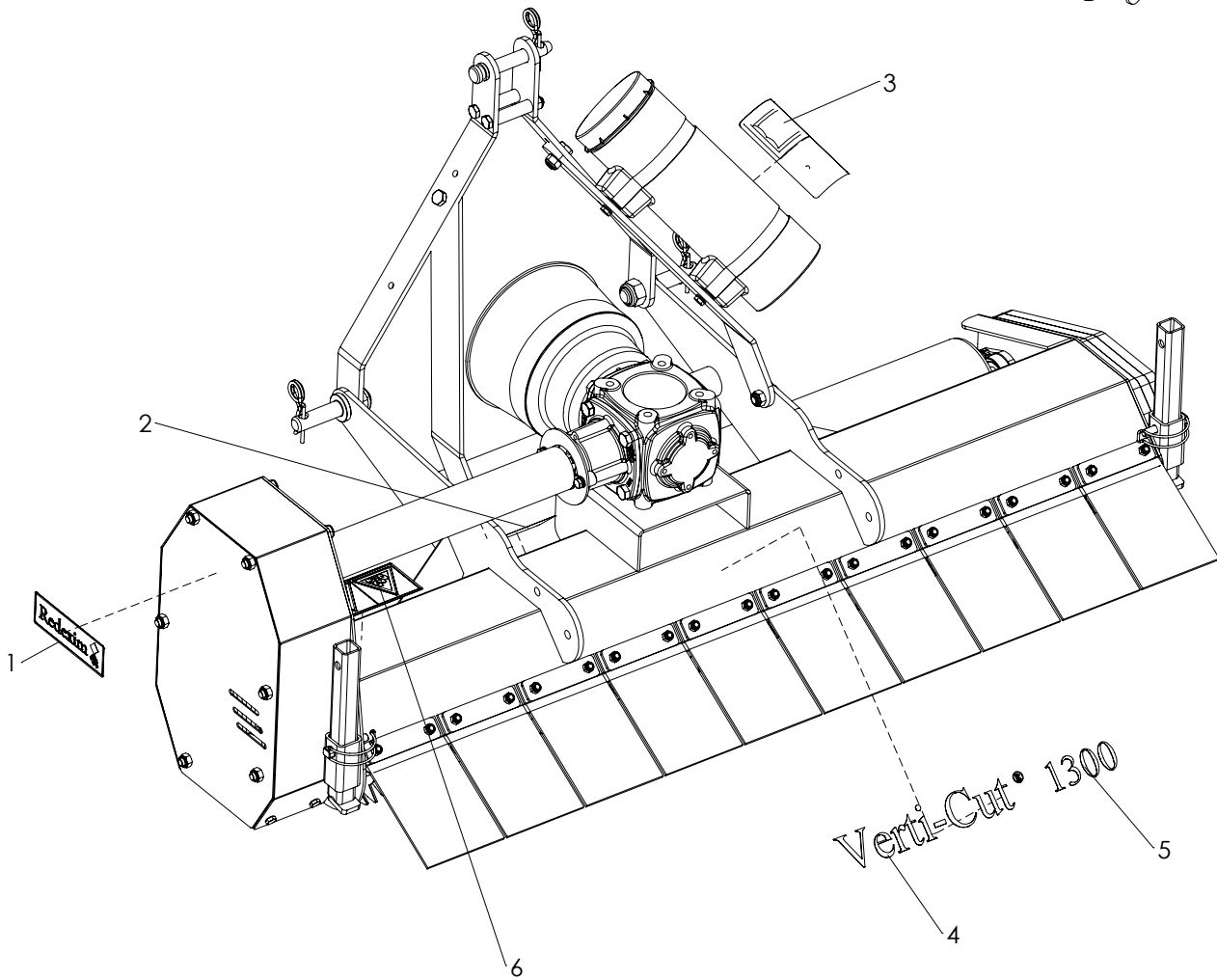
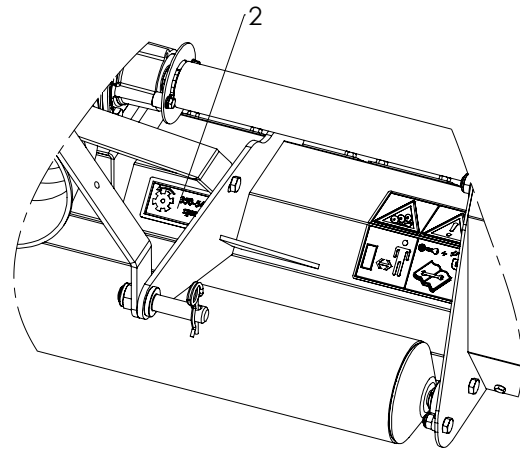
Page 05



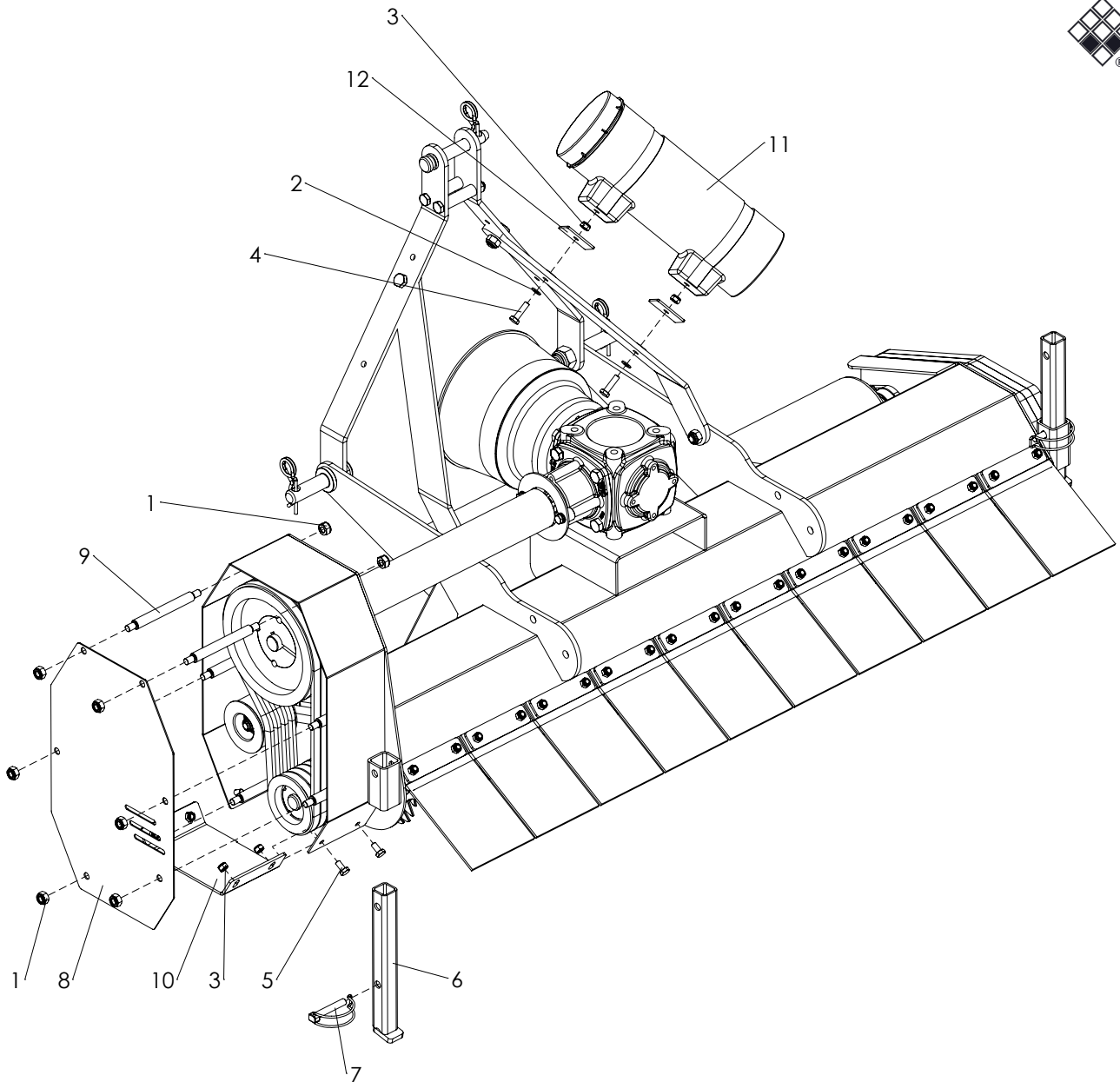
Page 08



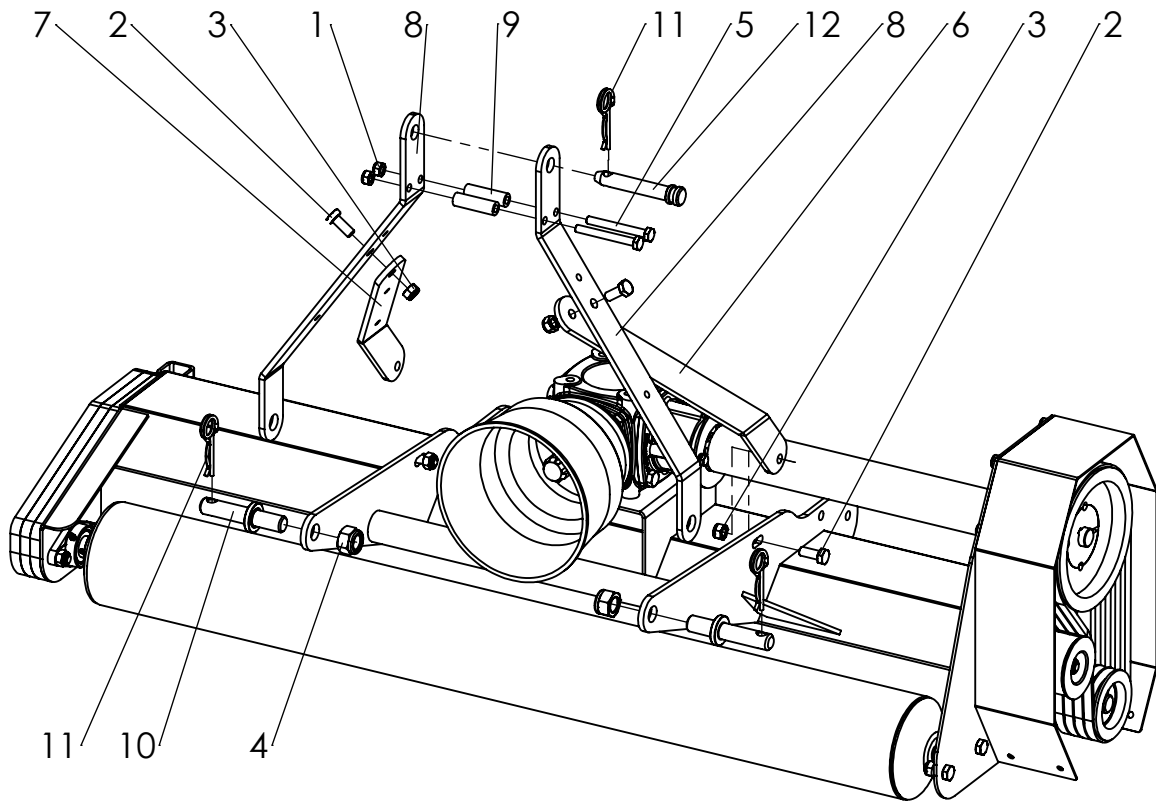
Decals: Page 02



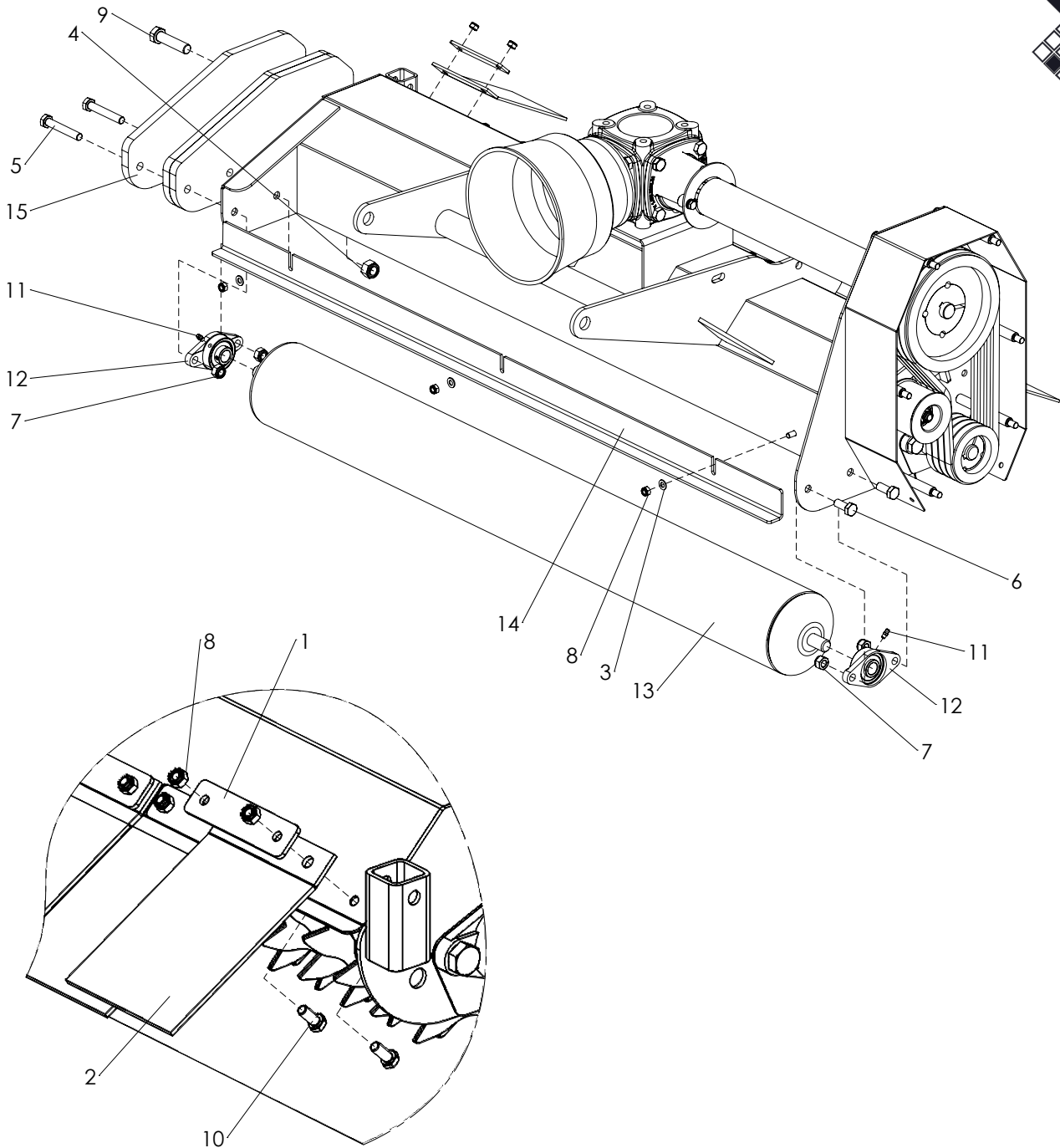
ITEM	PART NUMBER	DESCRIPTION	REMARKS	QUA
1	900.260.403	Logo Label		1
2	900.260.422	Decal PTO 350 540		1
3	900.280.402	Safety decall manual		1
4	944.260.404	Label Verti-Cut		1
5	914.260.404	Decall 1300		1
6	921.280.402	Safety decall VS		1



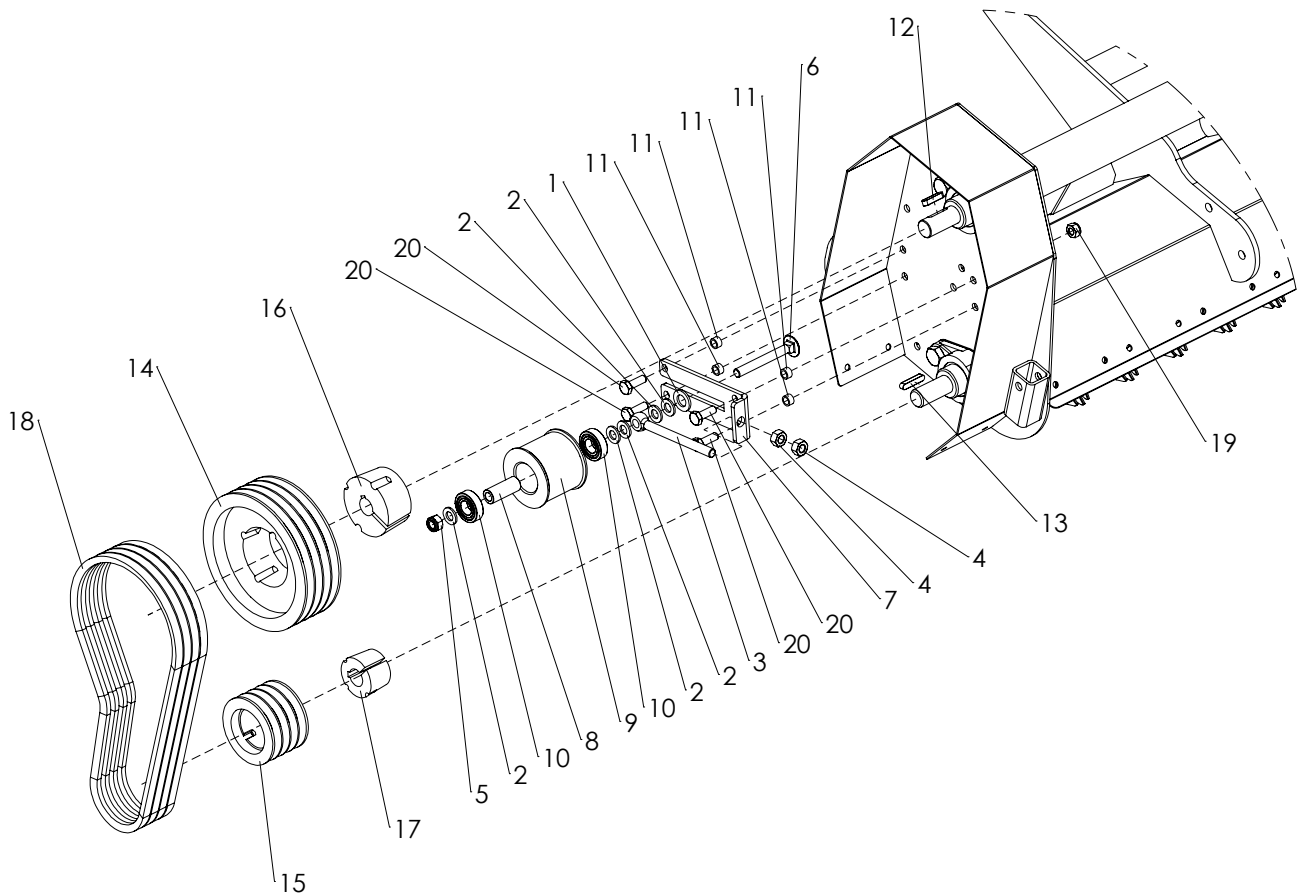
ITEM	PART NUMBER	DESCRIPTION	REMARKS	QUA
1	830.100.100	Self Lock Nut M10 - ISO 10511		12
2	864.080.030	Washer M8 - ISO 7089		2
3	830.080.080	Self Lock Nut M8 - ISO 10511		6
4	804.080.300	Bolt M8 x 30 - ISO 4017		2
5	804.080.160	Bolt M8 x 16 - ISO 4017		4
6	460.402.600	Jack L=260		2
7	523.100.700	Pipe linch pin Ø10		2
8	468.024.410	Cover		1
9	472.151.500	Stud L=150		6
10	468.042.050	Bottom cover plate		1
11	444.803.100	Toolbox		1
12	468.030.530	Toolbox contraplate		2



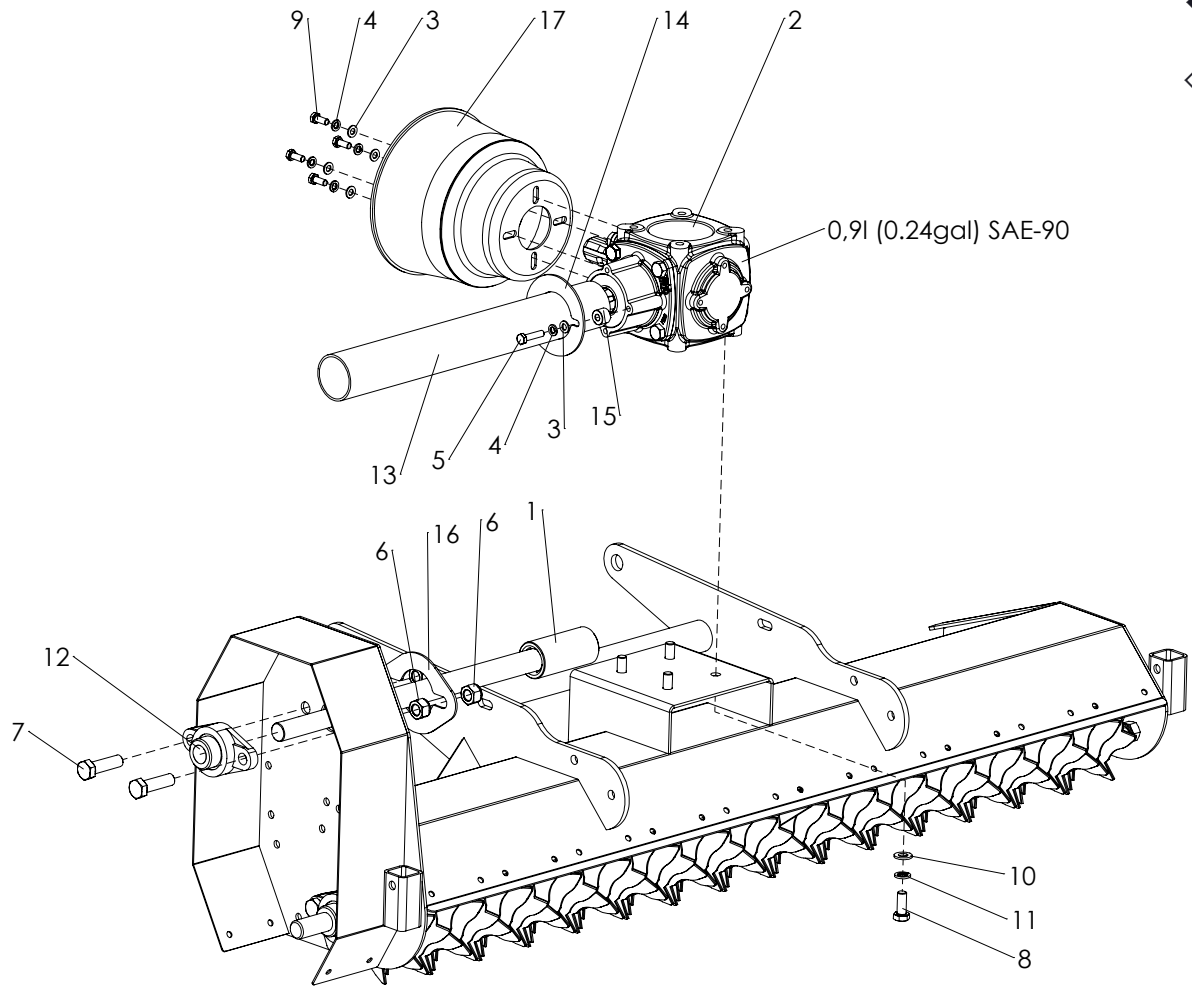
ITEM	PART NUMBER	DESCRIPTION	REMARKS	QUA
1	830.100.100	Self Lock Nut M10 - ISO 10511		2
2	804.120.300	Bolt M12 x 30 - ISO 4017		4
3	830.120.120	Self Lock Nut M12 - ISO 10511 Class 10		4
4	830.220.220	Self Lock Nut M22 - ISO 10511		2
5	802.100.900	Bolt M10 x 90 - ISO 4014		2
6	464.084.852	3-point draw strip left		1
7	464.084.850	3-point draw strip right		1
8	464.085.250	3-Point plate		2
9	406.100.600	Spacer for gearplate		2
10	2490881	Bottom 3-Point Pin		2
11	523.051.000	R-clip Round 5, DIN 11024		3
12	521.191.120	Top Link Pin		1



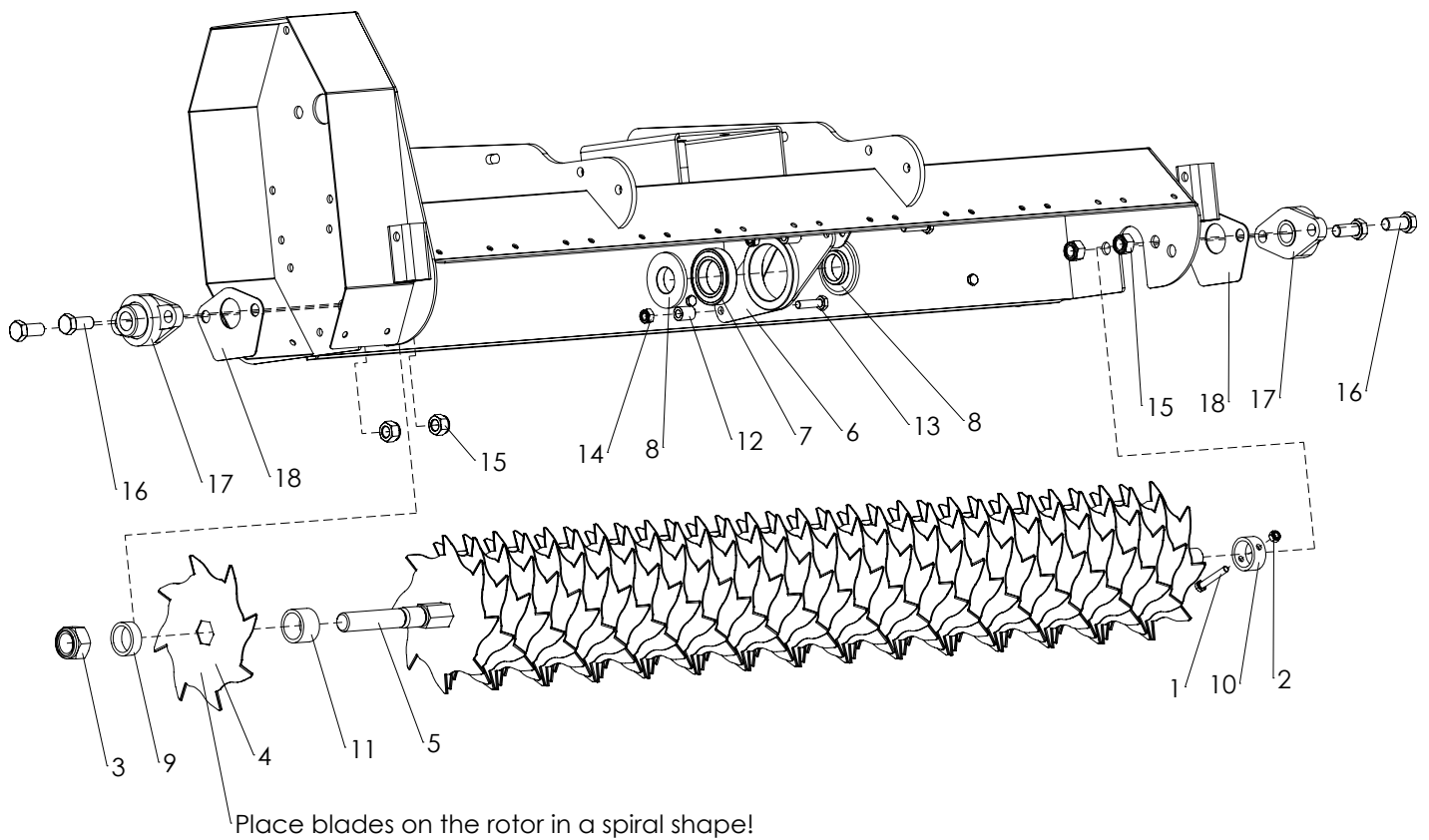
ITEM	PART NUMBER	DESCRIPTION	REMARKS	QUA
1	406.360.280	Spacer L=28		10
2	446.042.000	Rubber strip		10
3	864.080.030	Washer M8 - ISO 7089		11
4	830.160.160	Self Lock Nut M16-ISO 10511 Class 10		1
5	802.120.750	Bolt M12 x 75 - ISO 4014		2
6	804.120.300	Bolt M12 x 30 - ISO 4017		2
7	830.120.120	Self Lock Nut M12 - ISO 10511 Class 10		4
8	830.080.080	Self Lock Nut M8 - ISO 10511		20
9	802.160.650	Bolt M16 x 65 - ISO 4014 - 10.9		1
10	804.080.200	Bolt M8 x 20 - ISO 4017		20
11	880.060.100	Grease nipple M6 DIN 71412A		2
12	742.200.330	Bearing UCFL 204		2
13	488.140.135	Front roller Ø140 L=1348		1
14	468.049.130	Scraper L=1320		1
15	468.103.780	Weight		3



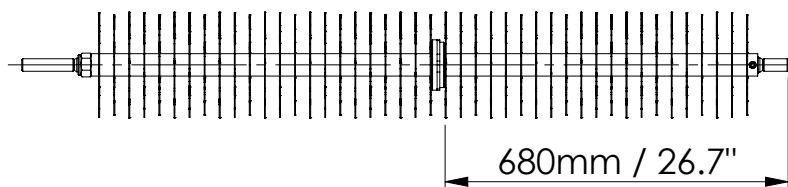
ITEM	PART NUMBER	DESCRIPTION	REMARKS	QUA
1	864.160.030	Washer M16 - ISO 7089		1
2	864.120.030	Washer M12 - ISO 7089		5
3	822.121.400	Eye Bolt M12x140 DIN 444LB (full thread)		1
4	826.120.120	Nut M12 - DIN 934		2
5	830.120.120	Self Lock Nut M12 - ISO 10511 Class 10		1
6	820.121.000	MH Bolt M12 x 100 ISO 8677		1
7	468.061.700	Spanner plate		1
8	402.120.500	Distance bush Ø20/Ø12 L=50		1
9	428.720.850	Idler Ø85 L=72		1
10	713.200.120	Bearing 6004 2HRS		2
11	402.100.080	Distance bush shaking sieve		4
12	884.080.351	Key 8x7x35 - DIN 6885		1
13	884.080.400	Key 8x7x40 - DIN 6885		1
14	646.011.900	Pulley SPA 190-4 TL2517		1
15	646.010.900	Pulley SPA 90-4 TL1615		1
16	648.252.517	Taperlock 2517 - 25mm		1
17	648.251.615	Taperlock 1615 - 25mm		1
18	642.131.007	V-Belt XPA 1007		4
19	830.100.100	Self Lock Nut M10 - ISO 10511		4
20	804.100.300	Bolt M10 x 30 - ISO 4017		4



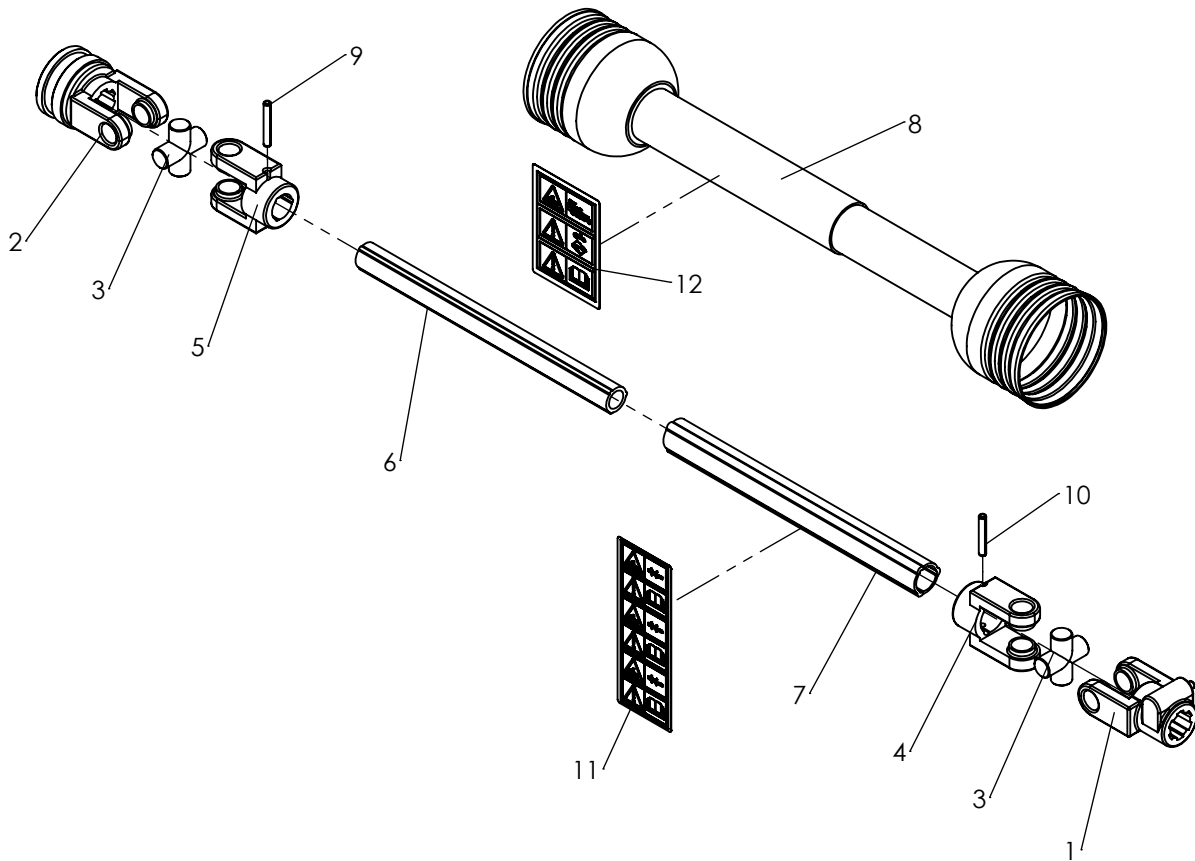
ITEM	PART NUMBER	DESCRIPTION	REMARKS	QUA
1	691.001.000	Splined bush 1-3_8" Z6 L=100		1
2	622.170.211	Comer T-19A 1:1,84		1
3	864.080.030	Washer M8 - ISO 7089		6
4	866.080.020	Spring Washer M8 - DIN 127		6
5	802.080.350	Bolt M8 x 35 - ISO 4014		2
6	830.160.160	Self Lock Nut M16-ISO 10511 Class 10		4
7	804.160.550	Bolt M16 x 55 - ISO 4017		2
8	804.120.300	Bolt M12 x 30 - ISO 4017		4
9	804.080.200	Bolt M8 x 20 - ISO 4017		4
10	864.120.030	Washer M12 - ISO 7089		4
11	866.120.020	Spring Washer M12 - DIN 127		4
12	742.250.430	Bearing UELFL205		1
13	444.605.250	Protection tube		1
14	468.031.106	Cover holder		1
15	402.080.150	Distance bush		2
16	468.031.490	Pipe holder		1
17	629.210.192	PTO Cover Comer		1



Position center bearing



ITEM	PART NUMBER	DESCRIPTION	REMARKS	QUA
1	802.080.550	Bolt M8 x 55 - ISO 4014		1
2	830.080.080	Self Lock Nut M8 - ISO 10511		1
3	830.270.274	Self Lock Nut M27x1.5 - ISO 10512		1
4	341.302.210	Scarify blade Ø210 th=2mm		44
4.1	341.303.210	Scarify blade Ø210 th=3mm	Optional	44
5	422.309.150	Rotor shaft V-Cut 1300		1
6	470.242.600	Bearing house		1
7	713.450.160	Bearing 6009-LLU		1
8	404.350.130	Centrer bearing bush L=13		2
9	406.360.150	Spacer L=15		1
10	406.360.200	Spacer L=20		1
11	406.360.280	Spacer L=28		43
12	406.100.230	Distance bush Ø10/Ø18 L=23		2
13	802.100.400	Bolt M10 x 40 - ISO 4014 - 10.9		2
14	830.100.100	Self Lock Nut M10 - ISO 10511		2
15	830.160.160	Self Lock Nut M16-ISO 10511 Class 10		4
16	804.160.350	Bolt M16 x 35 - ISO 4017		4
17	742.250.430	Bearing UELFL205		2
18	468.021.310	Cover Plate		2



INDEX #	REDEXIM P/N	DESCRIPTION	WEIGHT (Kg)	QUA
1	141022001	Splined push pin yoke	1.01	1
2	141022324	Complete collar yoke type 20	1.47	1
3	180012130	Cross and 4x circlip kit	0.29	2
4	151012003	Outer tube yoke type 20	0.87	1
5	151012002	Inner tube yoke type 20	0.74	1
6	153120223	T20 Inner Tube	1.07	1
7	1521203250700	T20 Outer tube	1.07	1
8	1422202647230	Complete guard 20-series	0.42	1
9	190000012	Roll Pin 8 x 55	0.013	1
10	190000011	Roll Pin 8 x 50	0.012	1
11	190000358	DECAL - PTO INNER	0.002	1
12	190000359	DECAL - PTO OUTSIDE	0.002	1
	613.805.100	PTO complete T20	8.9	