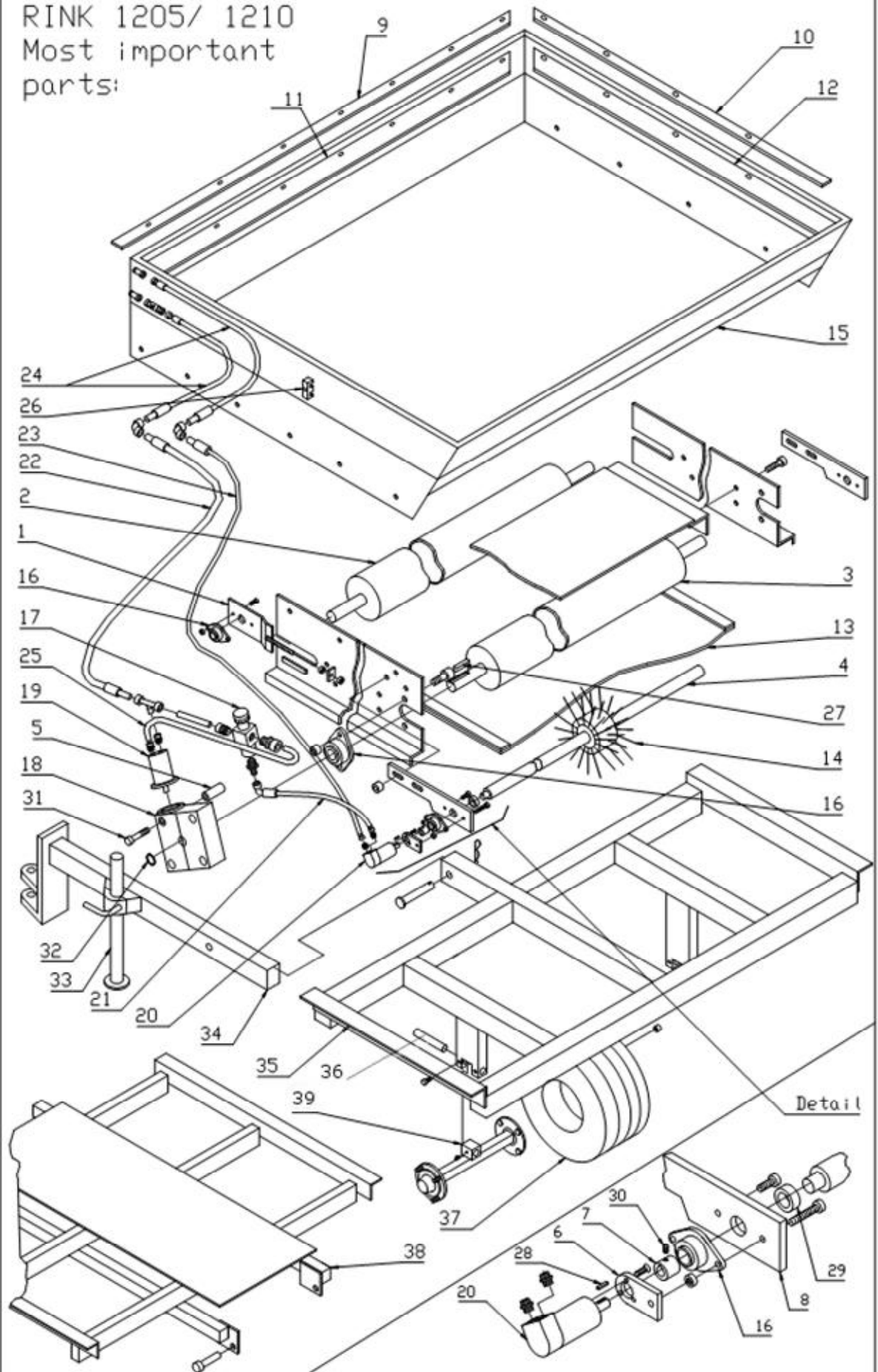


RINK 1205/ 1210  
Most important  
parts:



<b>Part No.</b>	<b>Designation</b>	<b>Part No. 1205</b>	<b>Part No. 1210</b>	<b>Remark</b>
1	Clamping device	16112	16112	
2	Transport roller front	16216	16216	
3	Transport roller rear	16214	16214	rubberized
4	Shaft for brush roller	16217	16217	
5	Torque support for conveyor belt drive system	16161	16161	
6	Torque support for brush roller drive system	16157	16157	
7	Connecting sleeve	16160	16160	
8	Holder for brush roller	16115	16115	
9	Clamp rail front	19000	19000W	
10	Clamp rail aside	19001	19001W	
11	Rubber stripper front	10709	10709	
12	Rubber stripper aside	10708	10708	
13	Conveyor belt	10698	10698	
14	Spreading roller unit	10356	10356	
15	Hopper	10699	10699	Aluminium
16	Flange bearing dia. 30 mm	11001	11001	Lubrication instructions !
17	Regulator 12 l	10335	10335	
18	Conveyor belt gear	10492	10492	Oil change instructions !
19	Hydraulic motor for transport roller	10572	10572	
20	Hydraulic motor for brush roller	10473	10473	
21	Hydraulic hose NW 10x280	10673	10673	
22	Hydraulic hose NW 10x400/1200	10672	10675	
23	Hydraulic hose NW 10x750/1500	10671	10674	
24	Hydraulic hose NW 10x 1400/ 2800	10657	10667	
25	Hydraulic tube	10444	10444	Tube 12x1
26	Holder for hydraulic hose	10348	10348	
27	Feather key 8x7x20	10100	10100	
28	Feather key 6x6x25	10483	10483	
29	Clamping Sleeve 8x30	10605	10605	
30	Set screw M 8x6	10430	10430	
31	Screw M 10x100	10600	10600	
32	Circlip 30x1.5	11002	11002	
33	Support jack		10023	
34	Tow bar		16150	
35	Chassis for 1210		16220	
36	Wheel shaft		16137	
37	Complete wheel		10525	
38	Chassis for 1205	16221		
39	Wheel Axle		16138	