

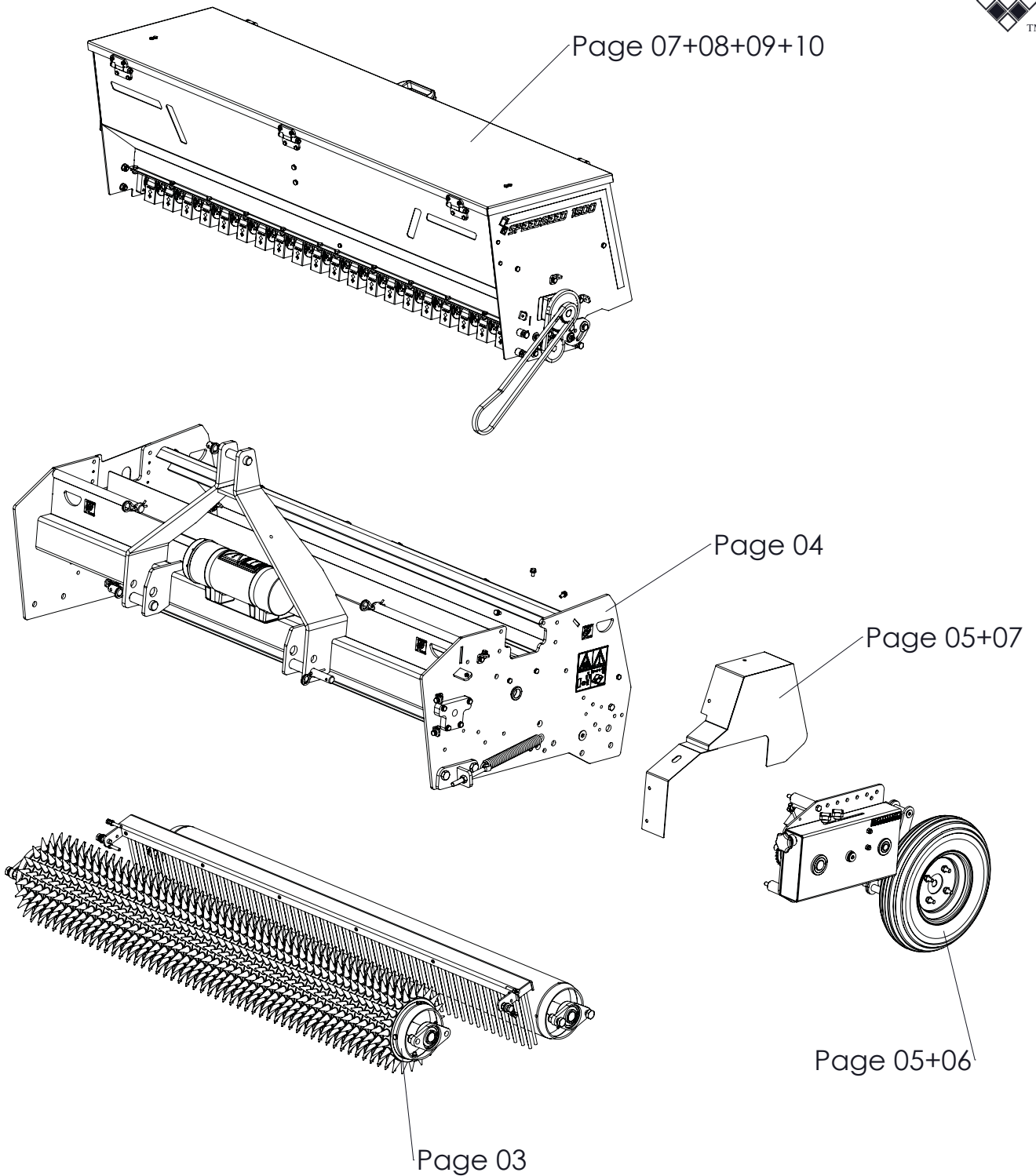
***SPEEDSEED 2000-2300***



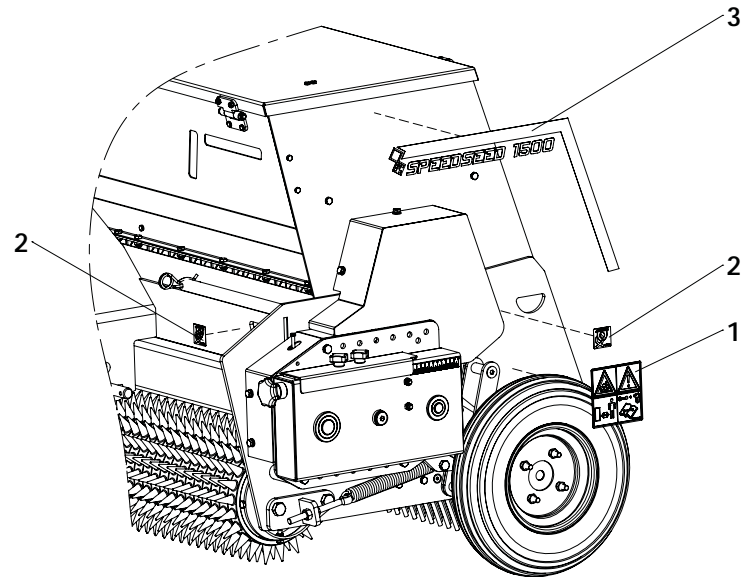
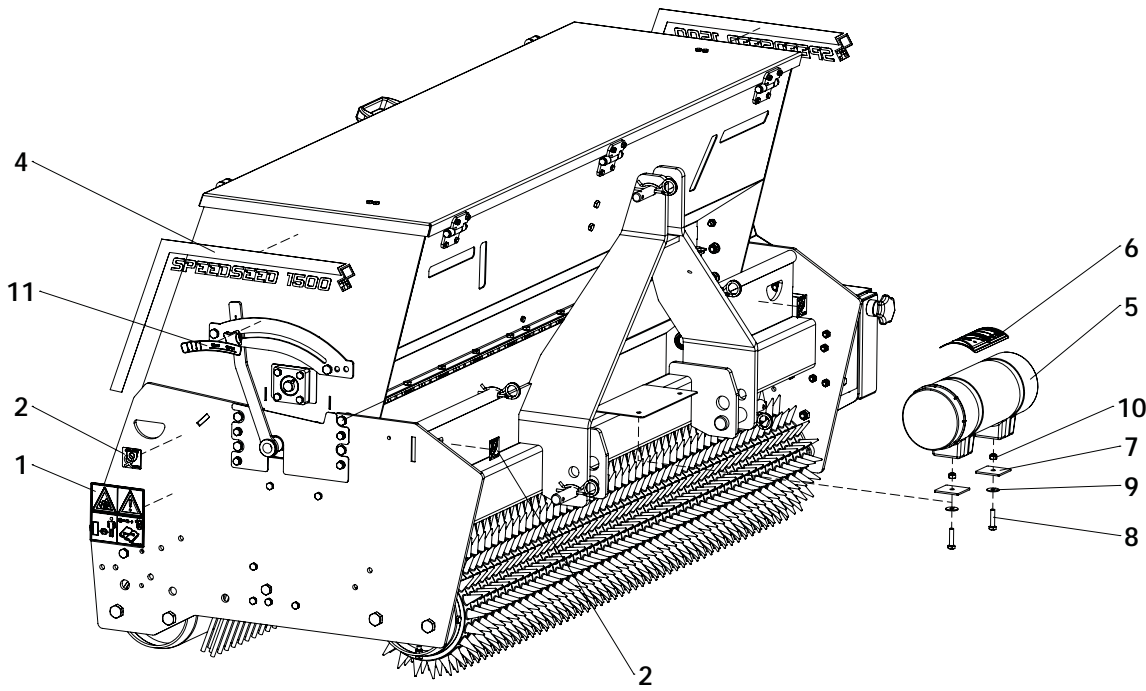
Version: 2242



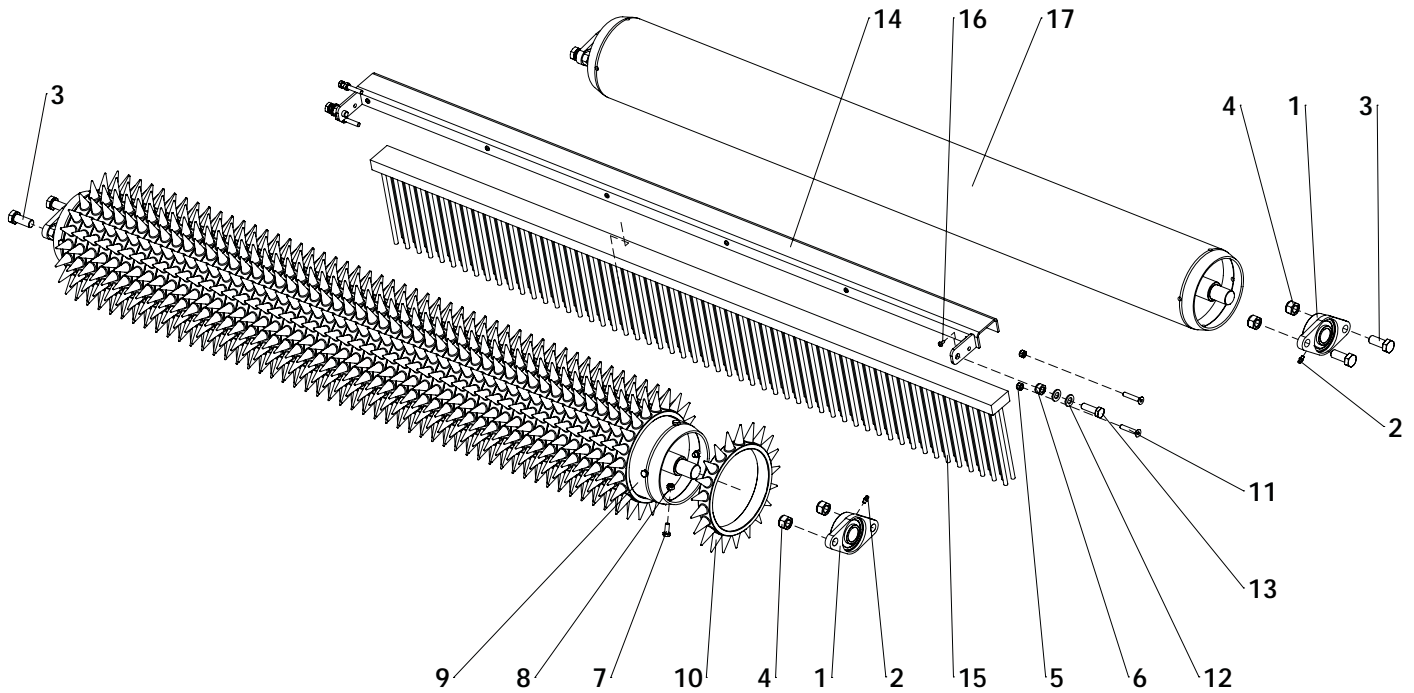
Kwekerijweg 8 | 3709JA | Zeist | The Netherlands |  
T: +31 (0)306 933 227  
E: [redexim@redexim.com](mailto:redexim@redexim.com)  
W: [www.redexim.com](http://www.redexim.com)



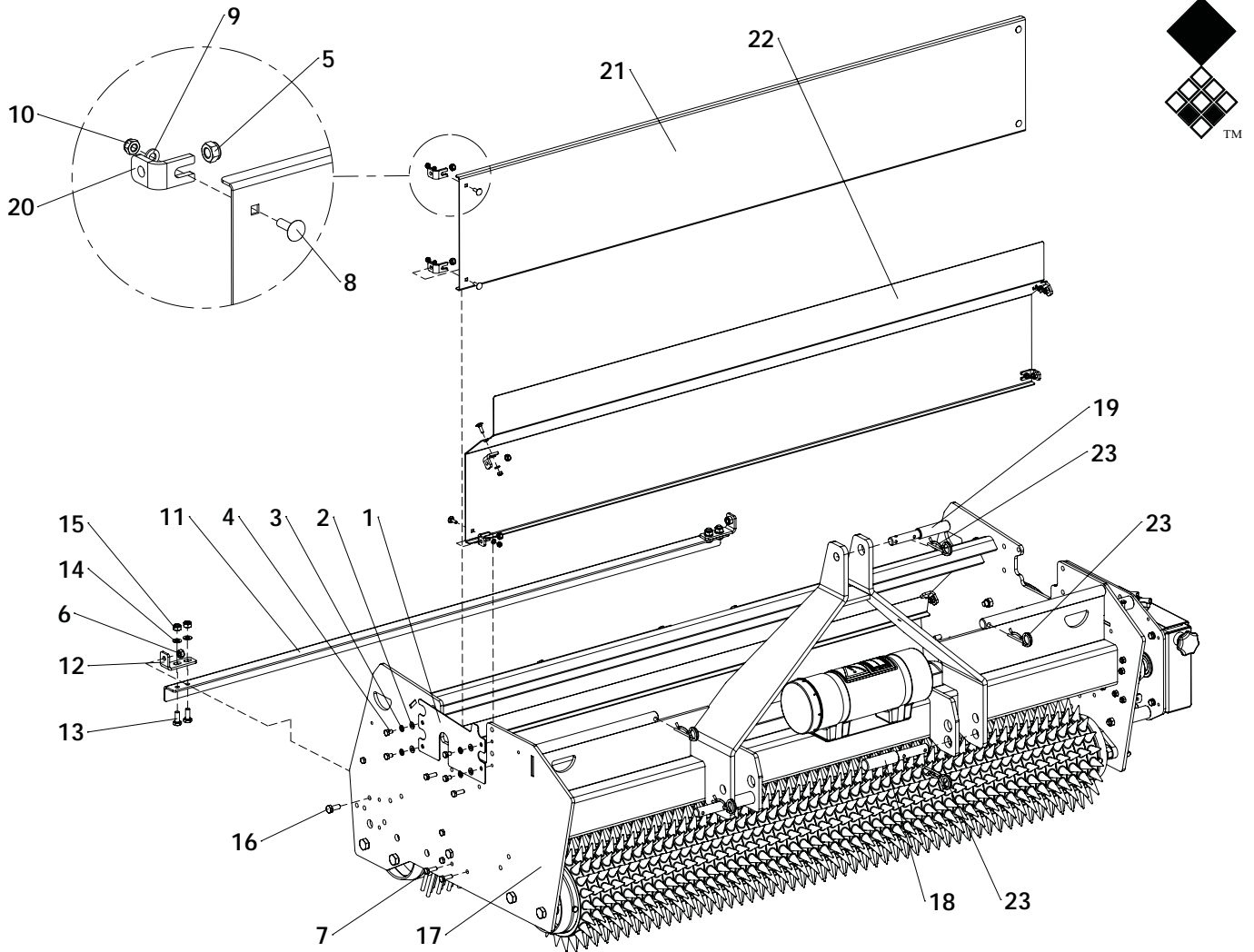
Page 11 - Option: Rear roller with spikes  
Page 12 - Option: Brush scraper complete  
Page 13 - Option: Crushing rear roller  
Page G1: Gearbox



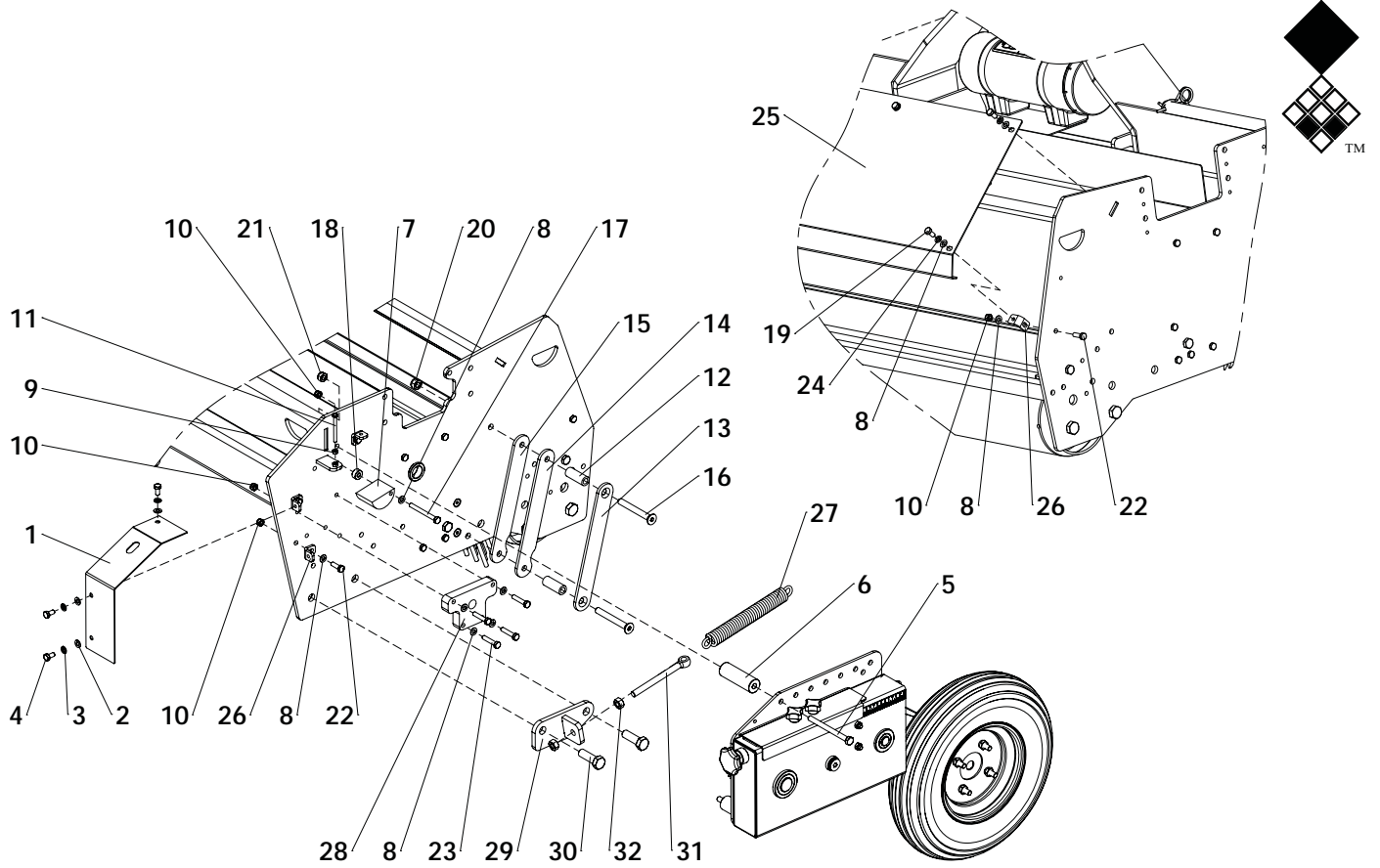
ITEM	PART NUMBER	DESCRIPTION	REMARKS	QUA 2000	QUA 2300
1	921.280.402	Safety decall VS		2	2
2	922.340.008	Decall fixation point		4	4
3	900.260.004	Label speedseed 2000 left		1	0
	900.260.006	Label speedseed 2300 left		0	1
4	900.260.005	Label speedseed2000 right		1	0
	900.260.007	Label speedseed 2300 right		0	1
5	444.803.100	Toolbox Complete		1	1
6	900.280.402	Safety decall manual		1	1
7	468.030.530	Toolbox contraplate		2	2
8	804.080.350	Bolt M8 x 35 - ISO 4017		2	2
9	864.080.024	Large washer M8 - DIN 9021		2	2
10	830.080.080	Self Lock Nut M8 - ISO 10511		2	2
11	924.340.001	Decall adjustment valve		1	1



ITEM	PART NUMBER	DESCRIPTION	REMARKS	QUA 2000	QUA 2300
1	742.400.520	Bearing UCFL208		4	4
2	880.060.100	Grease nipple M6 DIN 71412A		4	4
3	804.160.400	Bolt M16 x 40 - ISO 4017		6	6
4	830.160.160	Self Lock Nut M16 10.9 - ISO 10511		8	8
5	830.080.080	Self Lock Nut M8 - ISO 10511		4	4
6	830.120.120	Self Lock Nut M12 - ISO 10511		2	2
7	804.080.200	Bolt M8 x 20 - ISO 4017		8	8
8	830.080.080	Self Lock Nut M8 - ISO 10511		8	8
9	478.059.200	Back roller		1	0
	478.059.240	Back roller		0	1
10	316.272.029	Spiked Segment		67	76
11	816.080.450	Bolt M8 x 45 DIN 7991		2	2
12	864.120.030	Washer M12 - ISO 7089		4	4
13	804.120.400	Bolt M12 x 40 - ISO 4017		2	2
14	494.210.130	Weld assy U-channel brush		1	0
	494.240.130	Weld assy U-channel brush		0	1
15	486.539.100	Rear lag brush		2	0
	486.219.243	Rear lag brush		0	1
16	860.050.130	Tapping screw 4.8 x 13 - DIN 7049		10	12
17	478.059.200	Back roller		1	0
	478.059.240	Back roller		0	1

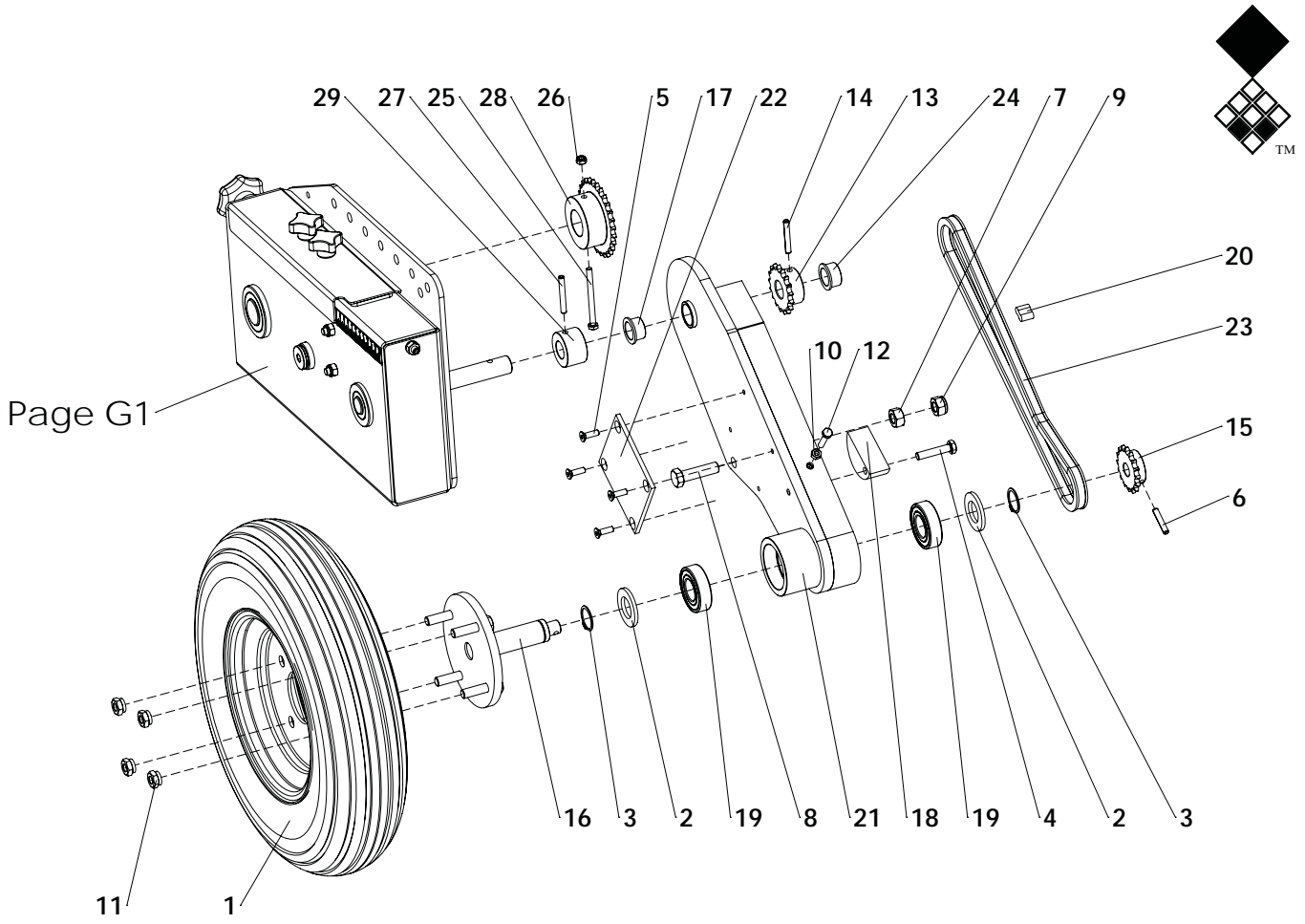


ITEM	PART NUMBER	DESCRIPTION	REMARKS	QUA 2000	QUA 2300
1	456.022.600	Side cover plate		1	1
2	864.080.030	Washer M8 - ISO 7089		4	4
3	866.080.020	Spring Washer M8 - DIN 127		4	4
4	804.080.120	Bolt M8 x 12 - ISO 4017		4	4
5	830.080.080	Self Lock Nut M8 - ISO 10511		8	8
6	830.100.100	Self Lock Nut M10 - ISO 10511		2	2
7	804.080.250	Bolt M8 x 25 - ISO 4017		8	8
8	820.060.200	MH Bolt M6 x 20 ISO 8677		8	8
9	864.060.030	Washer M6 - ISO 7089		8	8
10	830.060.060	Self Lock Nut M6 - ISO 10511		8	8
11	468.049.212	Scraper		1	0
	462.049.242	Scraper		0	1
12	464.050.850	Bracket scraper		2	2
13	804.100.250	Bolt M10 x 25 - ISO 4017		4	4
14	864.100.030	Washer M10 - ISO 7089		4	4
15	830.100.100	Self Lock Nut M10 - ISO 10511		4	4
16	804.100.250	Bolt M10 x 25 - ISO 4017		2	2
17	494.218.087	Frame Speedseed 2000		1	0
	494.247.087	Frame Speedseed 2300		0	1
18	521.221.600	3-point pin		2	2
19	521.191.600	Top link pin OS		1	1
20	464.053.500	Cover mounting bracket		8	8
21	468.029.211	Seed Guide Plate Front		1	0
	468.029.241	Seed Guide Plate Front		0	1
22	469.029.218	Seed guide plate front		1	0
	469.029.245	Seed guide plate front		0	1
23	523.051.000	R-clip Round 5, DIN 11024		5	5

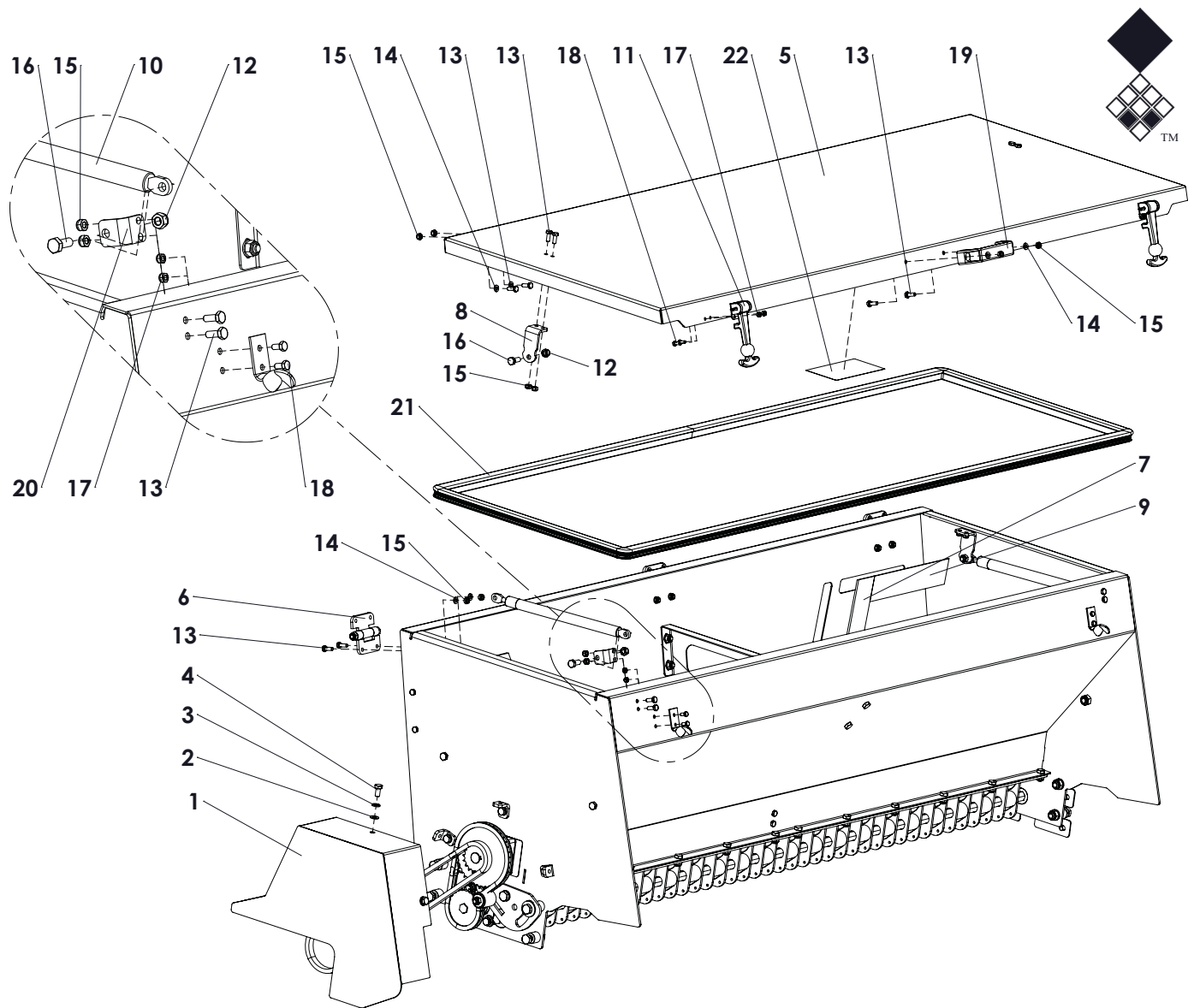


ITEM	PART NUMBER	DESCRIPTION	REMARKS	QUA 2000	QUA 2300
1	456.196.088	Cover		1	1
2	864.080.030	Washer M8 - ISO 7089		3	3
3	866.080.020	Spring Washer M8 - DIN 127		3	3
4	804.080.160	Bolt M8 x 16 - ISO 4017		3	3
5	802.101.200	Bolt M10 x 120 - ISO 4014		3	3
6	402.110.920	Spacer		3	3
7	444.500.600	Chain Tensioner		1	1
8	864.080.030	Washer M8 - ISO 7089		16	16
9	826.060.060	Nut M6 - DIN 934		1	1
10	830.080.080	Self Lock Nut M8 - ISO 10511		13	13
11	804.060.600	ISO 4017 - M6 x 60-C		1	1
12	406.200.510	Block bush Swing arm		2	2
13	468.062.804	Guide swing arm		1	1
14	444.062.800	Guide swing arm		1	1
15	468.062.800	Spacer		1	1
16	816.121.000	CSK Screw M12 x 100 - DIN 7991		2	2
17	802.080.800	Bolt M8 x 80 - ISO 4014		1	1
18	402.080.100	Distance bush		1	1
19	804.080.162	Bolt M8 x 16 - ISO 4017		4	4
20	830.120.120	Self Lock Nut M12 - ISO 10511 Class 10.9		2	2
21	830.100.100	Self Lock Nut M10 - ISO 10511		3	3
22	804.080.250	Bolt M8 x 25 - ISO 4017		5	5
23	804.080.400	Bolt M8 x 40 - ISO 4017		4	4
24	866.080.020	Spring Washer M8 - DIN 127		4	4
25	468.029.216	Cover plate		1	0
	468.029.245	Cover plate		0	1
26	464.050.300	Cover mounting bracket		7	7
27	575.302.250	Spring wheelaxle		1	1
28	444.201.300	Bearing plate		1	1
29	470.101.570	Bracket spring tensioner		1	1
30	804.160.500	Bolt M16 x 50 - ISO 4017		2	2
31	822.121.400	Eye Bolt M12x140 DIN 444LB (full thread)		1	1
32	826.120.120	Nut M12 - DIN 934		2	2



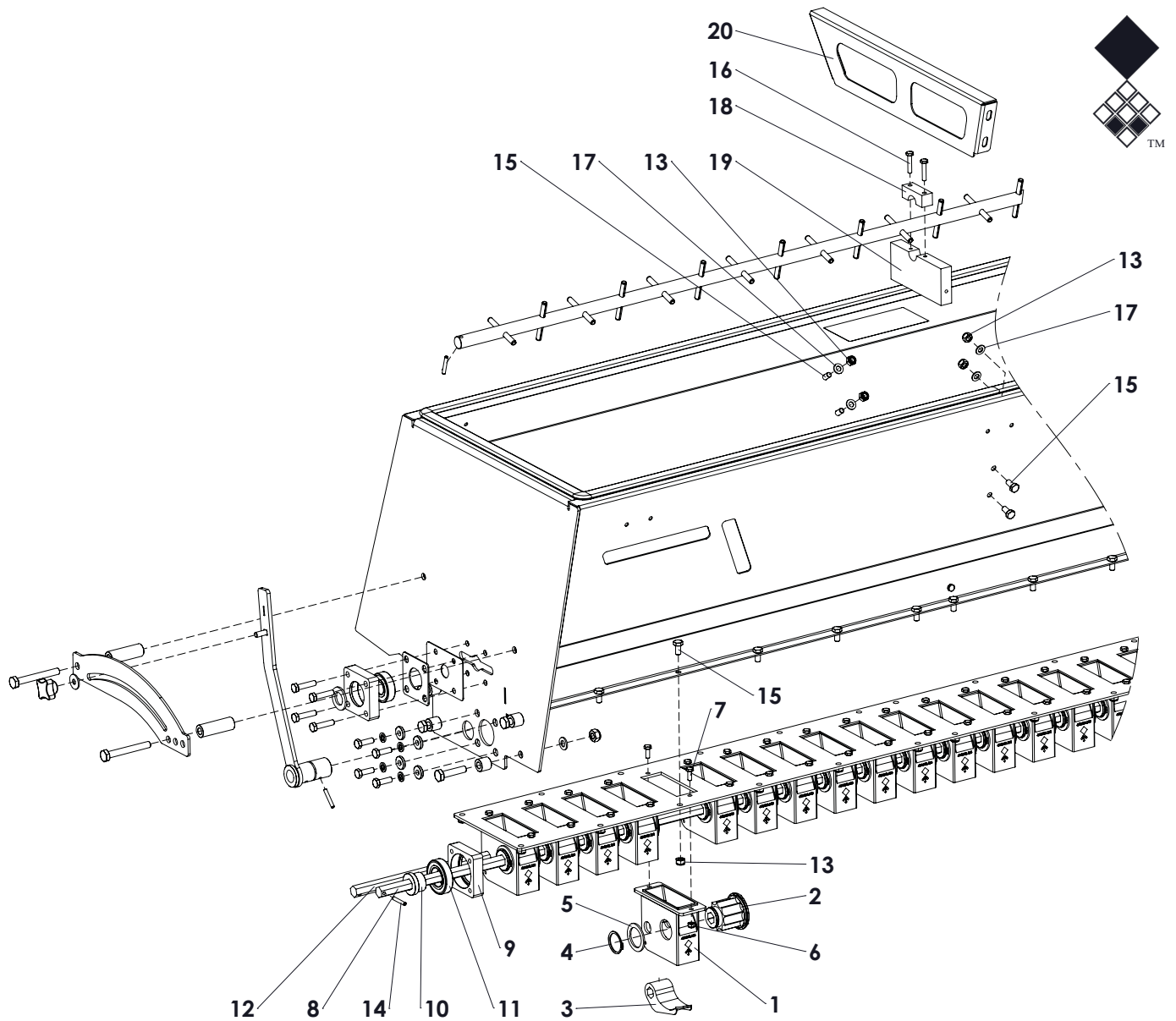


ITEM	PART NUMBER	DESCRIPTION	REMARKS	QUA 2000	QUA 2300
1	511.400.106	Tire 4.00-8/4PR		1	1
2	864.240.044	Washer M24 - ISO 7089		2	2
3	870.025.120	Circlip d=25 - DIN 471		2	2
4	802.080.400	Bolt M8 x 40 - ISO 4014		1	1
5	816.060.200	Bolt M6 x 20 - DIN 7991		4	4
6	878.060.320	Roll Pin 6 x 32 - ISO 8752		1	1
7	826.120.120	Nut M12 - DIN 934		1	1
8	802.120.450	Bolt M12 x 45 ISO 4014		1	1
9	830.120.120	Self Lock Nut M12 - ISO 10511 Class 10.9		1	1
10	826.060.060	Nut M6 - DIN 934		1	1
11	844.100.100	Wheel nut M10x1.25		4	4
12	804.060.300	Bolt M6 x 30 - ISO 4017		1	1
13	635.000.572	Sprocket 3/8" (06B) simplex 17Z		1	1
14	878.060.400	Roll Pin 6 x 40 - ISO 8752		1	1
15	635.000.540	Sprocket 3/8" (06B) simplex 16Z		1	1
16	474.251.400	Wheel hub		1	1
17	442.200.152	Bearing bush swingarm		1	1
18	444.250.600	Chain tensioner		1	1
19	713.250.150	Bearing 6205-LLU		2	2
20	638.090.090	Chain connector 3_8 inch 6B Simplex		1	1
21	466.160.000	Frame swingarm		1	1
22	444.051.000	Guide plate swingarm		1	1
23	631.000.817	Chain 3/8" Simplex L=817		1	1
24	442.200.150	Bearing bush gearaxle		1	1
25	802.060.700	Bolt M6 x 70 - ISO 4014		1	1
26	830.060.060	Self Lock Nut M6 - ISO 10511		1	1
27	878.060.450	Roll Pin 6 x 45 - ISO 8752		1	1
28	635.000.902	Sprocket 3/8" (06B) simplex 28Z Ø30		1	1
29	402.200.240	Distance bush		1	1

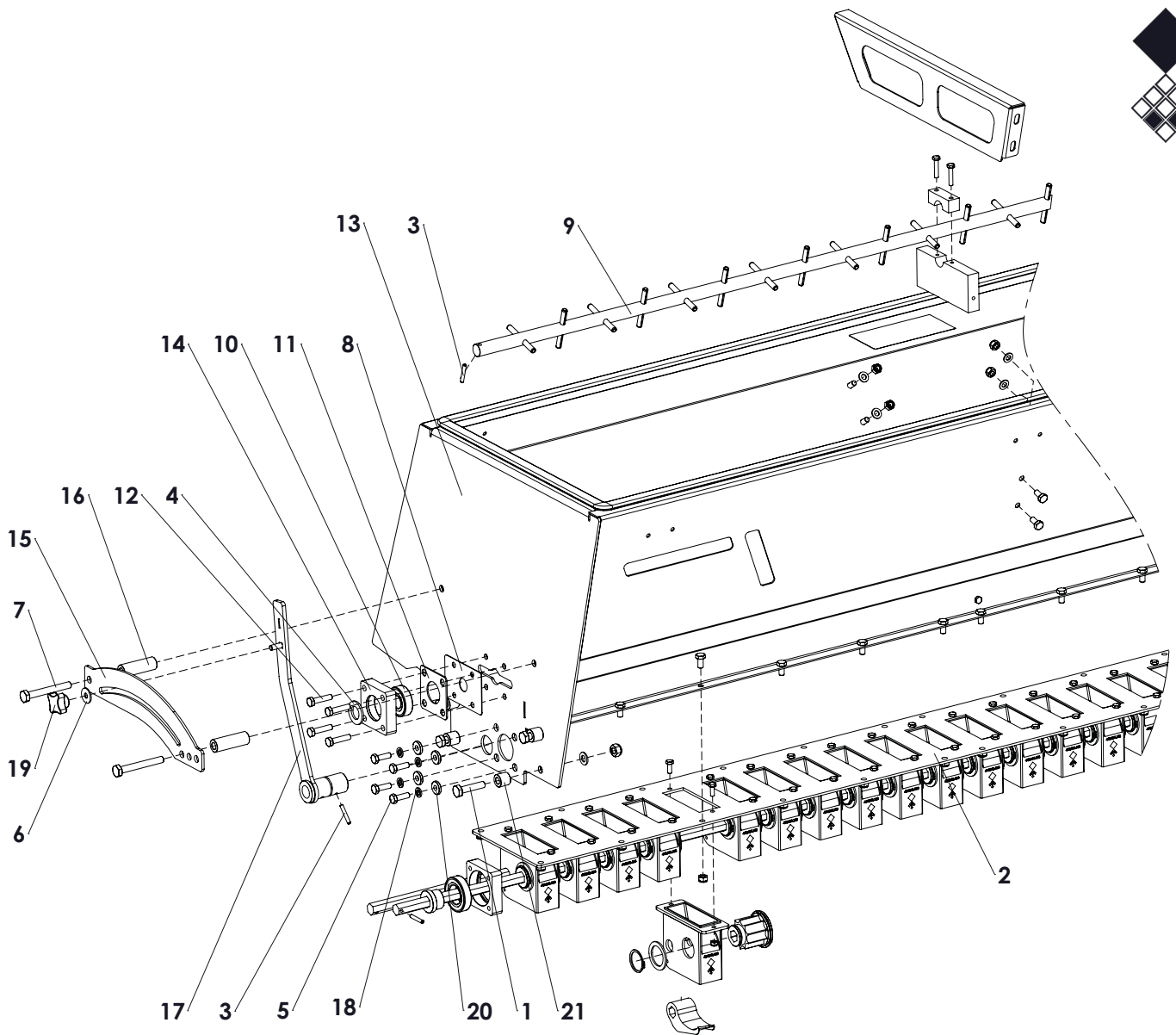


ITEM	PART NUMBER	DESCRIPTION	REMARKS	QUA 2000	QUA 2300
1	456.407.116	Cover		1	1
2	864.080.030	Washer M8 - ISO 7089		3	3
3	866.080.020	Spring Washer M8 - DIN 127		3	3
4	804.080.160	Bolt M8 x 16 - ISO 4017		3	4
5	456.215.052	Top cover		1	0
	456.243.052	Top cover		0	1
6	899.100.634	Hinge		3	3
7	444.041.300	Window		2	2
8	468.040.654	Support L=65mm		2	2
9	444.042.100	Window angle		2	2
10	571.224.854	Gas strut L=485/stroke=200, F=150N		2	2
11	590.650.000	Rubber lock assy		2	2
12	830.080.080	Self Lock Nut M8 - ISO 10511		6	6
13	804.060.160	Bolt M6 x 16 - ISO 4017		18	18
14	864.060.030	Washer M6 - ISO 7089		18	18
15	830.060.060	Self Lock Nut M6 - ISO 10511		18	18
16	804.080.200	Bolt M8 x 20 - ISO 4017		4	4
17	830.050.050	Self Lock Nut M5 - ISO 10511		8	8
18	804.050.100	Bolt M5 x 10 - ISO 4017		8	8
19	444.151.250	Handle		1	1
20	468.040.302	Support L=30mm		2	2
21	592.130.002	Glass Rubber		0	1
	592.130.008	Glass Rubber		1	0
22	924.280.000	Decal seed hopper		1	1

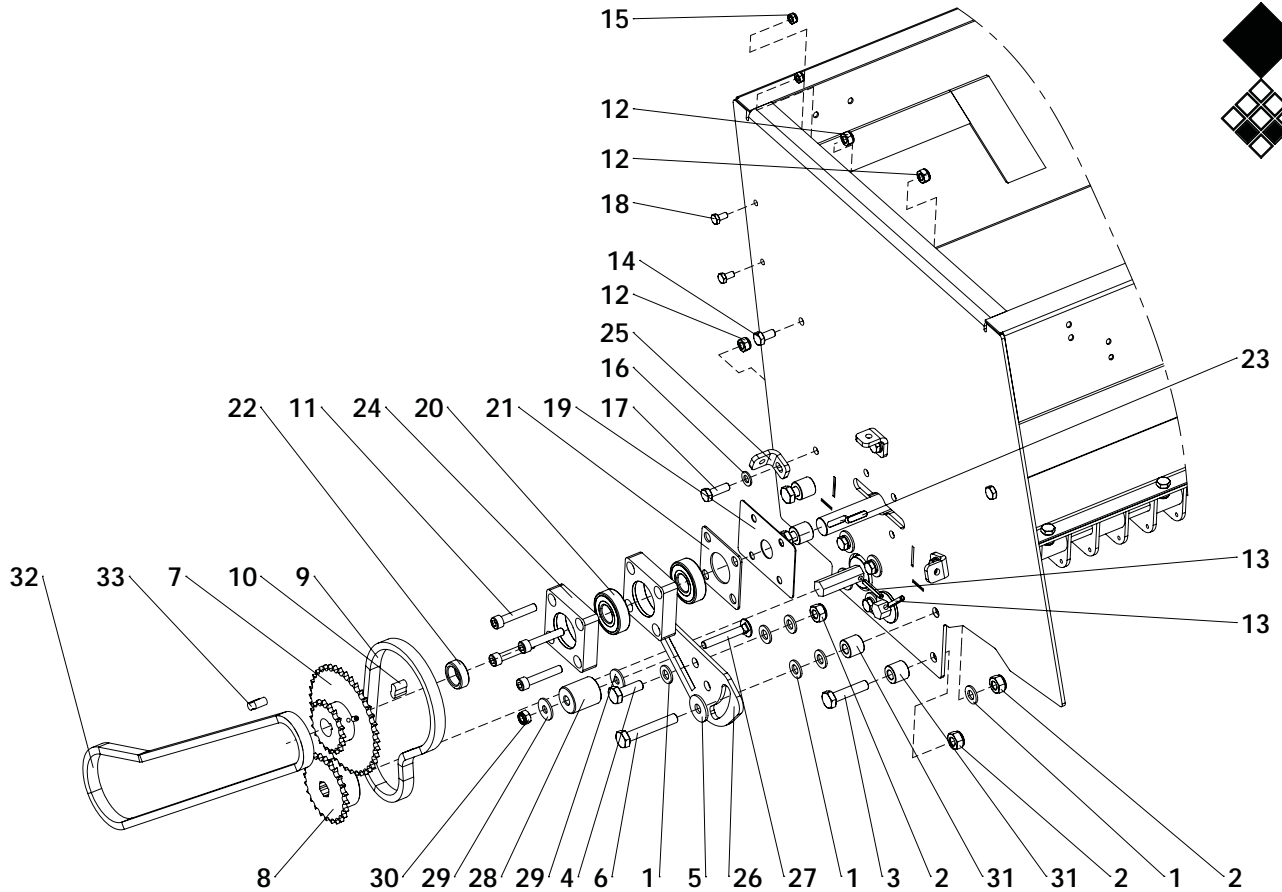




ITEM	PART NUMBER	DESCRIPTION	REMARKS	QUA 2000	QUA 2300
1	444.050.133	Seed element casing		28	31
2	444.058.510	Seed element rotor		28	31
3	444.034.760	Seed element valve		28	31
4	870.032.160	Circlip d=32 - DIN 471		28	31
5	412.020.450	Washer		28	32
6	830.060.060	Self Lock Nut M6 - ISO 10511		60	62
7	804.060.160	Bolt M6 x 16 - ISO 4017		60	62
8	422.169.220	Shaft		1	0
	422.169.250	Shaft		0	1
9	468.180.706	Bearing block		2	2
10	410.160.182	Bush		2	2
11	713.300.130	Bearing 6006 LLU		2	2
12	422.169.217	Shaft		1	0
	422.169.245	Shaft		0	1
13	830.080.080	Self Lock Nut M8 - ISO 10511		34	38
14	878.050.320	Roll pin Ø5x32		2	2
15	804.080.160	Bolt M8 x 16 - ISO 4017		34	38
16	804.060.300	Bolt M6 x 30 - ISO 4017		2	2
17	864.080.030	Washer M8 - ISO 7089		4	4
18	444.200.550	Guide Block support		2	2
19	444.201.442	Guide lock block		1	1
20	464.025.270	Center plate		1	1



ITEM	PART NUMBER	DESCRIPTION	REMARKS	QUA 2000	QUA 2300
1	804.100.450	Bolt M10 x 45 - ISO 4017		7	7
2	468.049.209	Plate		1	0
3	878.050.320	Roll pin Ø5x32		2	2
4	864.200.030	Washer M20 - ISO 7089		1	1
5	804.080.250	Bolt M8 x 25 - ISO 4017		8	8
6	864.080.024	Large washer M8 - DIN 9021		5	5
7	804.100.800	Bolt M10 x 80 - ISO 4017		2	2
8	468.011.002	Cover plate		1	1
9	474.209.223	Agitator shaft		1	0
	474.209.252	Agitator shaft		0	1
10	713.200.140	Bearing 6204-C-2HRS		1	1
11	468.020.704	Cover plate		1	1
12	804.080.350	Bolt M8 x 35 - ISO 4017		4	4
13	494.213.051	Hopper		1	0
	494.242.051	Hopper		0	1
14	468.180.704	Bearing block		1	1
15	464.041.752	Guide strip		1	1
16	406.110.600	Distance bush Ø20/Ø10.5 L=60		2	2
17	464.063.134	Valve adjustment		1	1
18	866.080.020	Spring Washer M8 - DIN 127		8	8
19	836.080.402	Closed Knob M8 - Din 6335		1	1
20	864.080.043	Washer M8 - DIN 7349		8	8
21	402.100.182	Distance bush		4	4

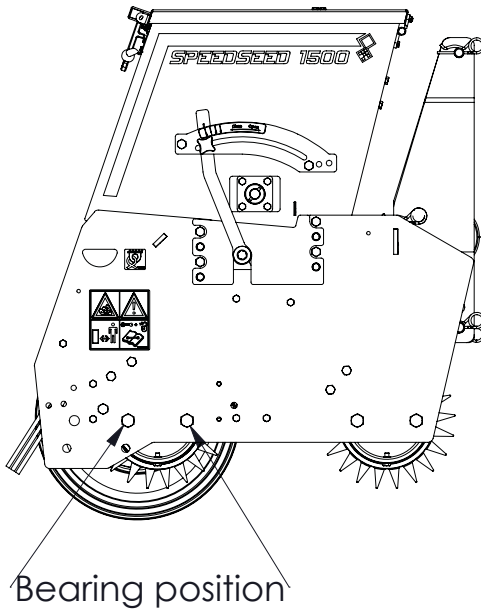


ITEM	PART NUMBER	DESCRIPTION	REMARKS	QUA 2000	QUA 2300
1	864.100.030	Washer M10 - ISO 7089		6	6
2	830.100.100	Self Lock Nut M10 - ISO 10511		5	5
3	804.100.450	Bolt M10 x 45 - ISO 4017		3	3
4	804.100.300	Bolt M10 x 30 - ISO 4017		1	1
5	864.100.031	Large washer M10 - DIN 9021		1	1
6	802.100.650	Bolt M10 x 65 - ISO 4014		1	1
7	484.014.004	Weldment sprocket		1	1
8	635.000.776	Sprocket 3/8" (06B) simplex Z24 Hex 16.2		1	1
9	631.000.489	Chain 3/8x7/32", L=524		1	1
10	638.090.090	Chain connector 3_8 inch 6B Simplex		1	1
11	814.080.450	Bolt M8 x 45 - DIN 912		4	4
12	830.080.080	Self Lock Nut M8 - ISO 10511		5	5
13	878.050.320	Roll pin Ø5x32		2	2
14	804.080.160	Bolt M8 x 16 - ISO 4017		2	2
15	830.060.060	Self Lock Nut M6 - ISO 10511		2	2
16	864.080.030	Washer M8 - ISO 7089		3	3
17	804.080.250	Bolt M8 x 25 - ISO 4017		3	3
18	804.060.120	Bolt M6 x 12 - ISO 4017		2	2
19	468.011.002	Cover plate		1	1
20	713.200.140	Bearing 6204-C-2HRS		2	2
21	468.020.704	Cover plate		1	1
22	402.210.100	Distance bush		1	1
23	884.060.250	Key 6x6x25 - DIN 6885		1	1
24	468.180.702	Bearing block		2	2
25	464.050.300	Cover mounting bracket		3	3
26	468.051.250	Spanner plate		1	1
27	820.080.550	Mushroom head bolt M8x55		1	1
28	444.300.350	Spanner roll		1	1
29	864.080.024	Large washer M8 - DIN 9021		2	2
30	830.080.080	Self Lock Nut M8 - ISO 10511		1	1
31	402.100.182	Distance bush		4	4
32	631.009.100	Chain 3/8x7/32", L=1028.7mm		1	1
33	638.090.090	Chain connector 3_8 inch 6B Simplex		1	1

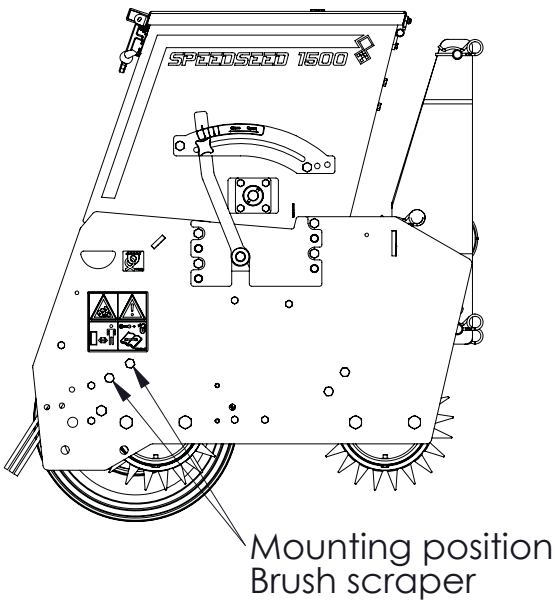
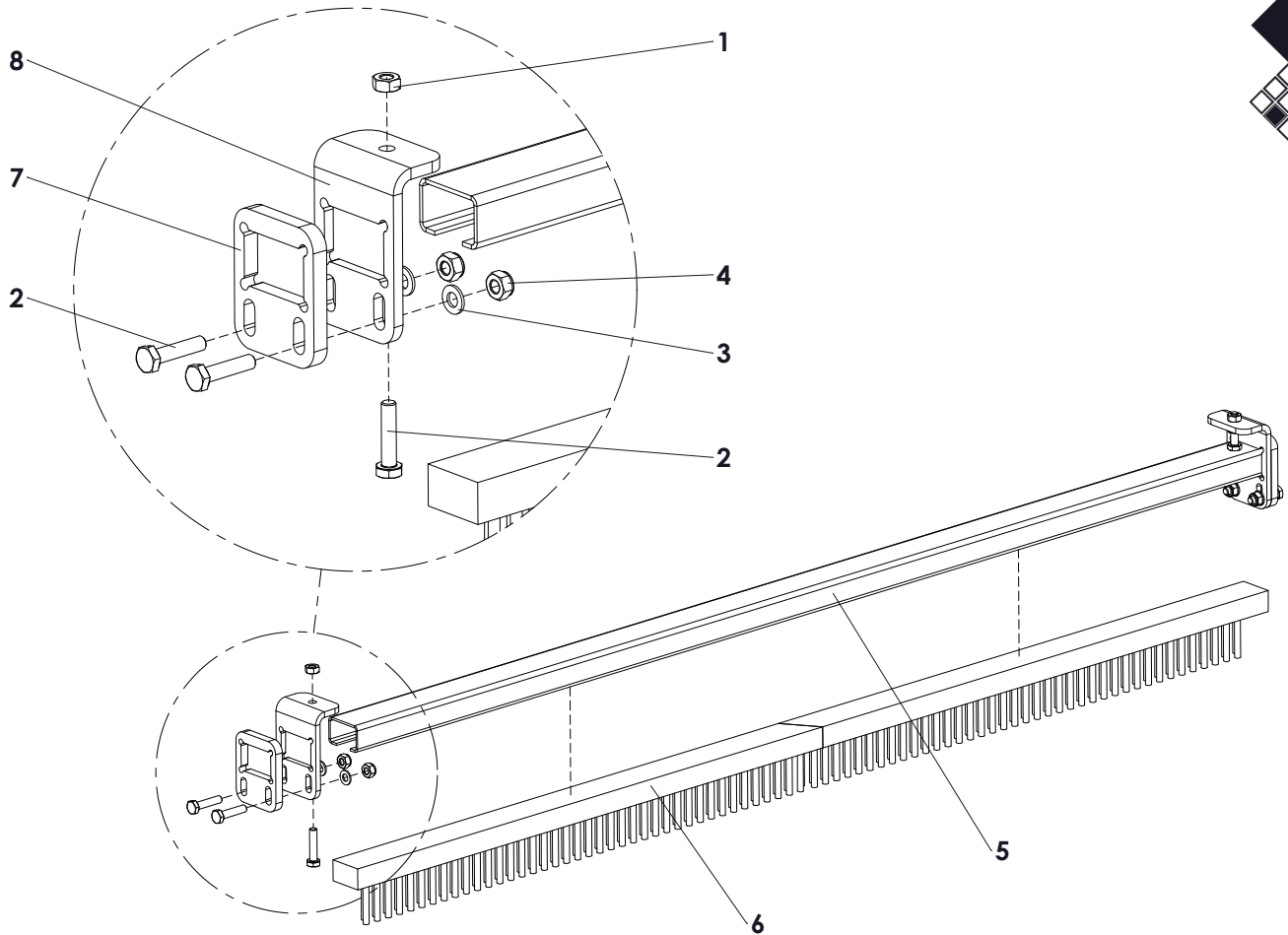


Option: Rear roller with spikes

Kit no.: 2000 - 224.210.000  
2300 - 224.240.000



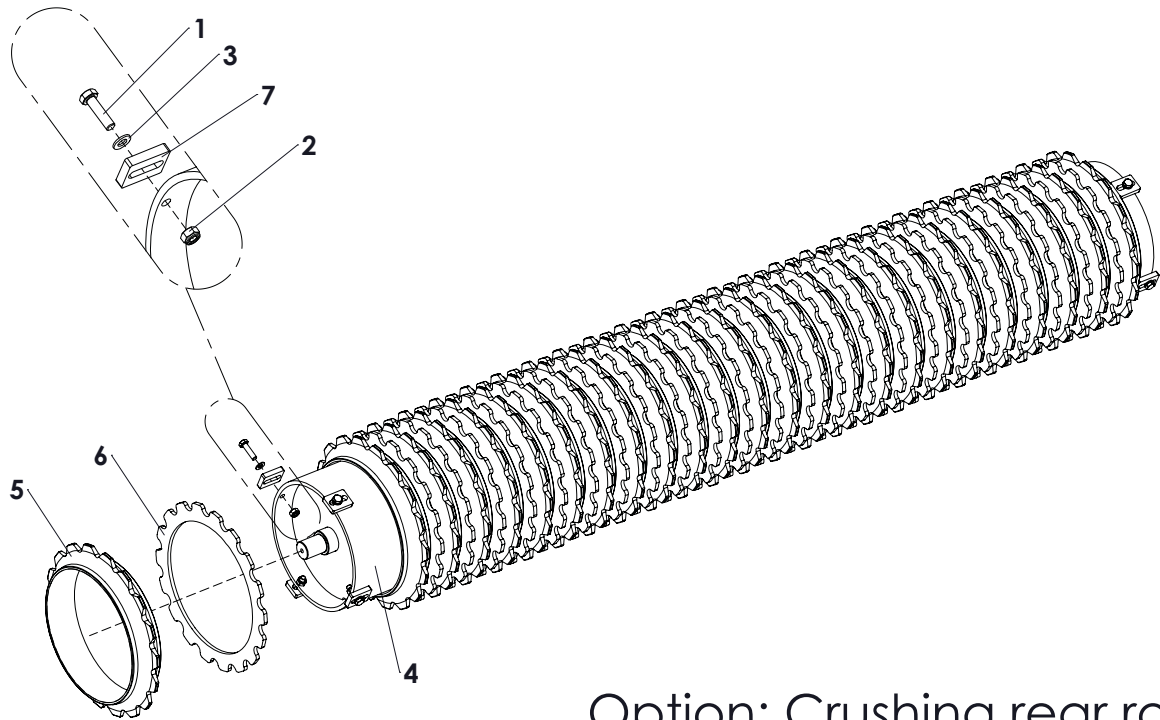
ITEM	PART NUMBER	DESCRIPTION	REMARKS	QUA 2000	QUA 2300
1	804.080.200	Bolt M8 x 20 - ISO 4017		8	8
2	830.080.080	Self Lock Nut M8 - ISO 10511		8	8
3	316.272.029	Spiked Segment		66	75
4	402.174.150	Spacer		2	2



Option: Brush scraper complete

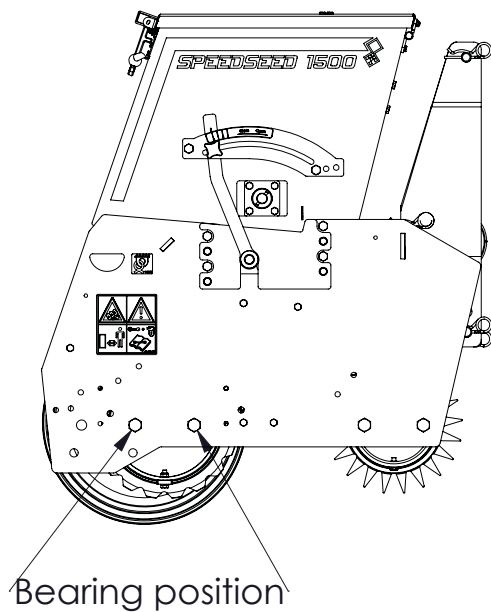
Kit no.: 2000 - 490.809.022  
2300 - 490.809.024

ITEM	PART NUMBER	DESCRIPTION	REMARKS	QUA 2000	QUA 2300
1	826.100.100	Nut M10 - DIN 934		4	4
2	804.100.450	Bolt M10 x 45 - ISO 4017		6	6
3	864.100.030	Washer M10 - ISO 7089		4	4
4	830.100.100	Self Lock Nut M10 - ISO 10511		4	4
5	468.039.220	Brush profile		1	0
	468.039.240	Brush profile		0	1
6	486.061.100	Brush		2	0
	486.061.240	Brush		0	2
7	468.121.000	Spacer brush scraper		2	2
8	468.081.100	Clamp bracket brush scraper		2	2



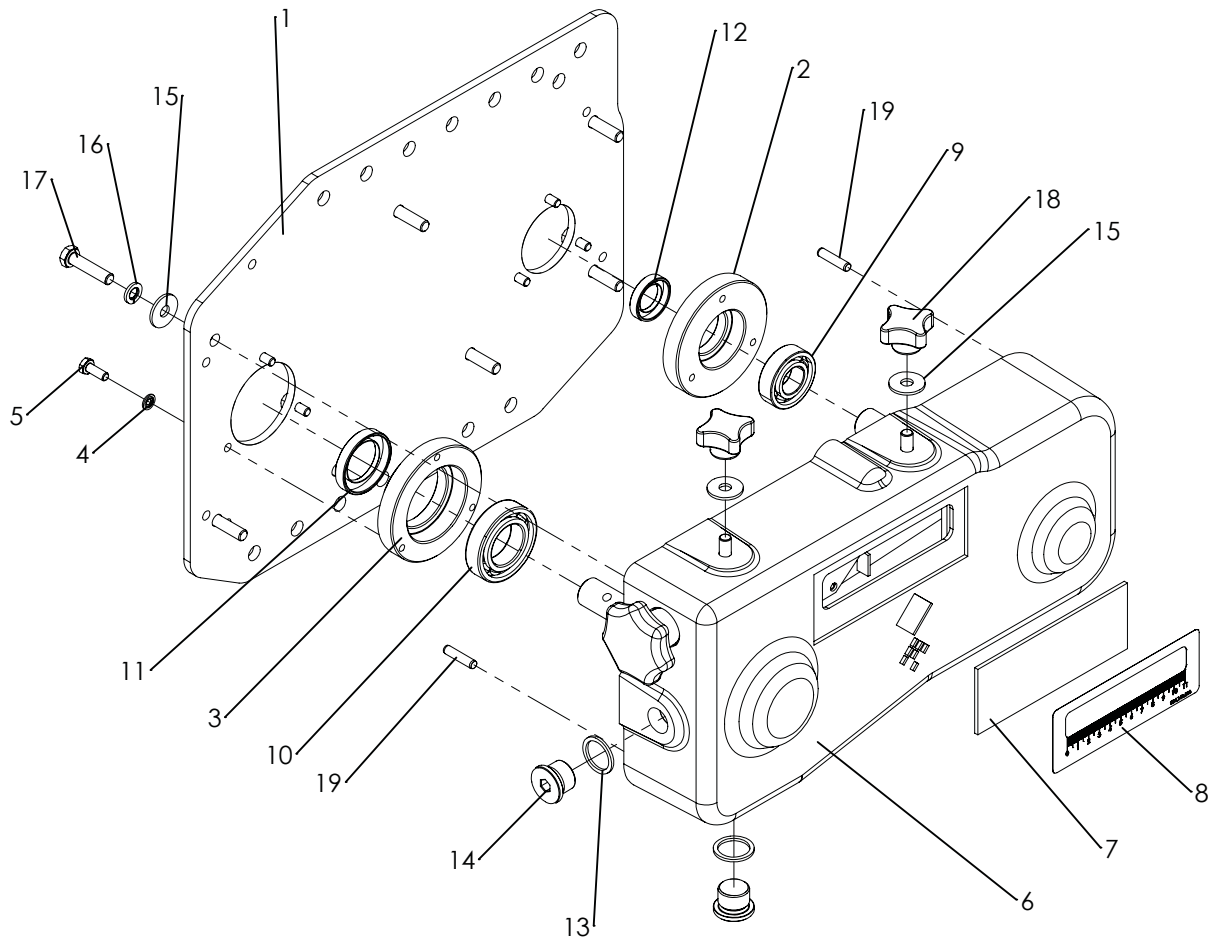
Option: Crushing rear roller

Kit no.: 2000 - 224.210.004  
2300 - 224.240.002

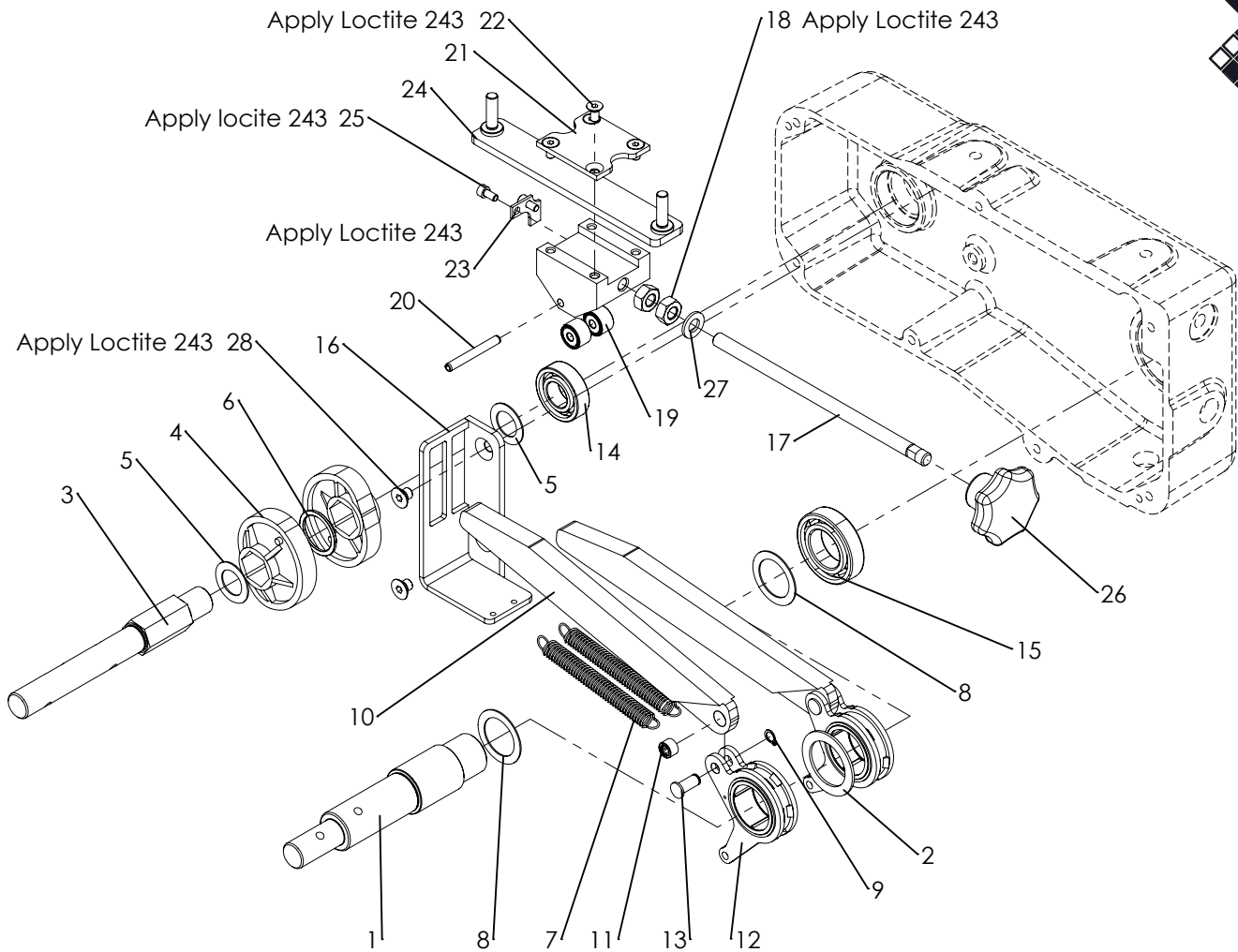


ITEM	PART NUMBER	DESCRIPTION	REMARKS	QUA 2000	QUA 2300
1	804.080.300	Bolt M8 x 30 - ISO 4017		8	8
2	830.080.080	Self Lock Nut M8 - ISO 10511		8	8
3	864.080.030	Washer M8 - ISO 7089		8	8
4	488.219.216	Rear roller		1	0
	488.219.245	Rear roller		0	1
5	316.292.055	Cast ring 9"		33	38
6	468.060.285	Spacer ring		34	37
7	468.080.400	Lock strip		8	8



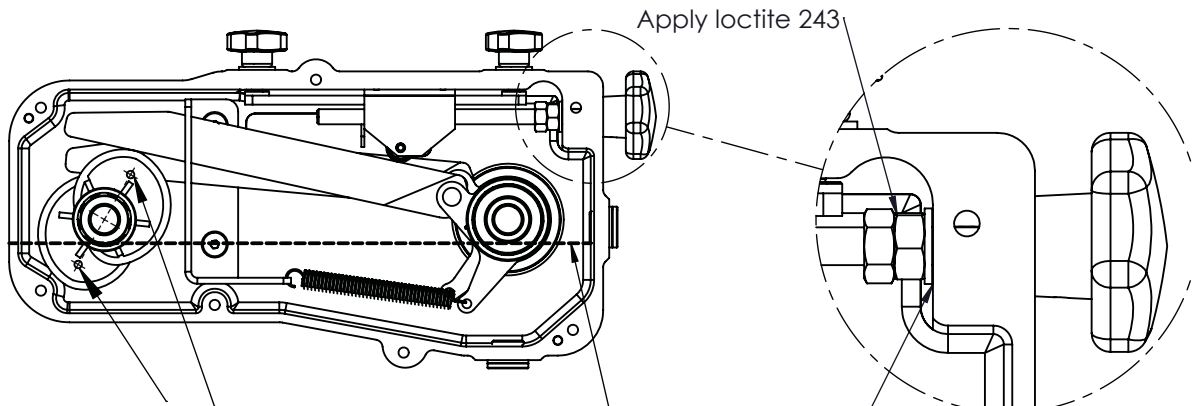


ITEM	PART NUMBER	DESCRIPTION	REMARKS	QUA
1	468.064.060	Lid plate		1
2	434.210.850	Bearing hub Ø42		1
3	434.230.850	Bearing hub Ø55		1
4	874.060.020	Bonded seal ring M6		6
5	804.060.160	Bolt M6 x 16 - ISO 4017		6
6	448.380.800	Casted gearbox housing		1
7	444.021.380	Window		1
8	934.140.510	Gauge decall		1
9	711.200.120	Bearing 6004		2
10	711.300.132	Bearing 6006		2
11	762.300.080	Oil seal 30-45-8		1
12	762.200.070	Oil seal 20-32-7		1
13	874.210.020	Copper washer 1_2		2
14	549.210.200	Blind plug G1/2		2
15	864.080.024	Large washer M8 - DIN 9021		9
16	866.080.020	Spring Washer M8 - DIN 127		7
17	804.080.350	Bolt M8 x 35 - ISO 4017		7
18	836.080.402	Closed Knob M8 - Din 6335		2
19	876.060.260	Parallel pin ISO 8734 - 6 x 26		2
	623.200.400	Gearbox complete		



ITEM	PART NUMBER	DESCRIPTION	REMARKS	QUA
1	422.351.382	Shaft		1
2	444.020.500	Washer		1
3	422.242.020	Shaft		1
4	444.200.730	Excenter		2
5	868.032.100	Shim Ø20xØ32x1.0 DIN988	Quantity depending on clearance	
6	406.280.030	Spacer		1
7	575.010.800	Spring		2
8	868.042.100	Shim Ø30xØ42x1.0 DIN988	Quantity depending on clearance	
9	870.008.080	Circlip d=8 - DIN 471		2
10	464.152.702	Rocker strip		2
11	721.080.080	Bearing HK0808		2
12	442.200.980	Rocker arm assembly		2
13	418.080.200	Pin		2
14	711.200.120	Bearing 6004		1
15	711.300.132	Bearing 6006		1
16	470.120.550	Guide		1
17	852.102.100	Threaded rod M10x210		1
18	826.100.100	Nut M10 - DIN 934		2
19	721.060.120	Roller bearing		2
20	878.060.500	Roll Pin 6 x 50 - ISO 8752		1
21	468.040.530	Lock plate		1
22	816.060.122	Bolt M6 x 12 - DIN 7991		4
23	468.020.490	Indicator		1
24	468.061.620	Slider bracket		1
25	814.050.100	DIN 912 M5 x 10 --- 10C		2
26	836.100.630	Knob M10 with set screw		1
27	864.100.030	Washer M10 - ISO 7089		1
28	816.080.100	Bolt M8 x 10 - DIN 7991		2

**Timing, Spindle adjustment and Oil level**



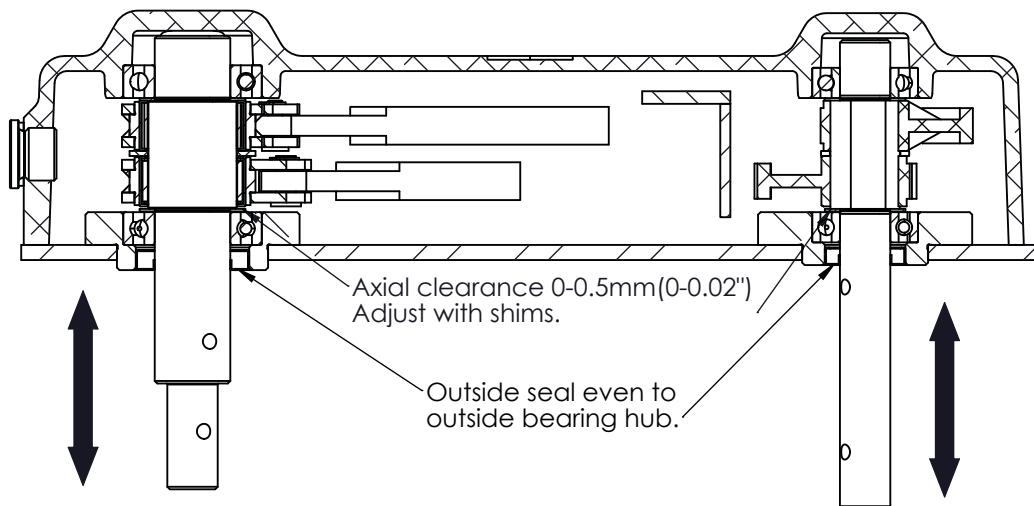
Warning! Make sure the excenters are positioned correct:

- The nodge has to be faced outwards.
- Timing: 180° shifted from each other

If not correctly installed a shocked rotation will occur at the output shaft.

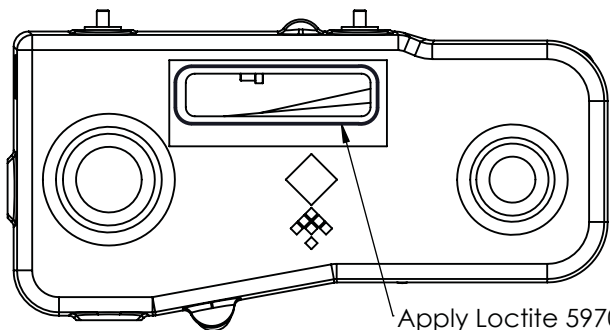
Fill gearbox with ±1,4L (0.37gal.)80W90 oil  
Fill till oil level line (Bottom level plug)

**Axial clearance**

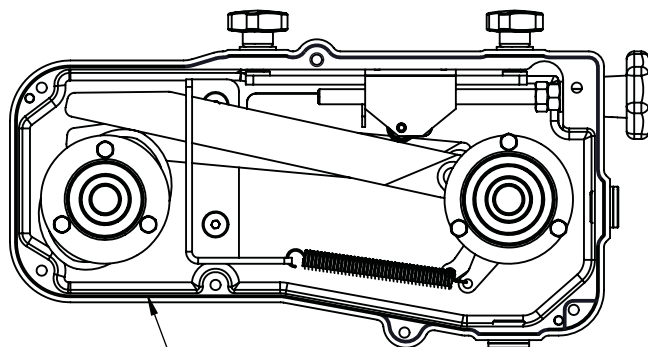


**Sealing plan**

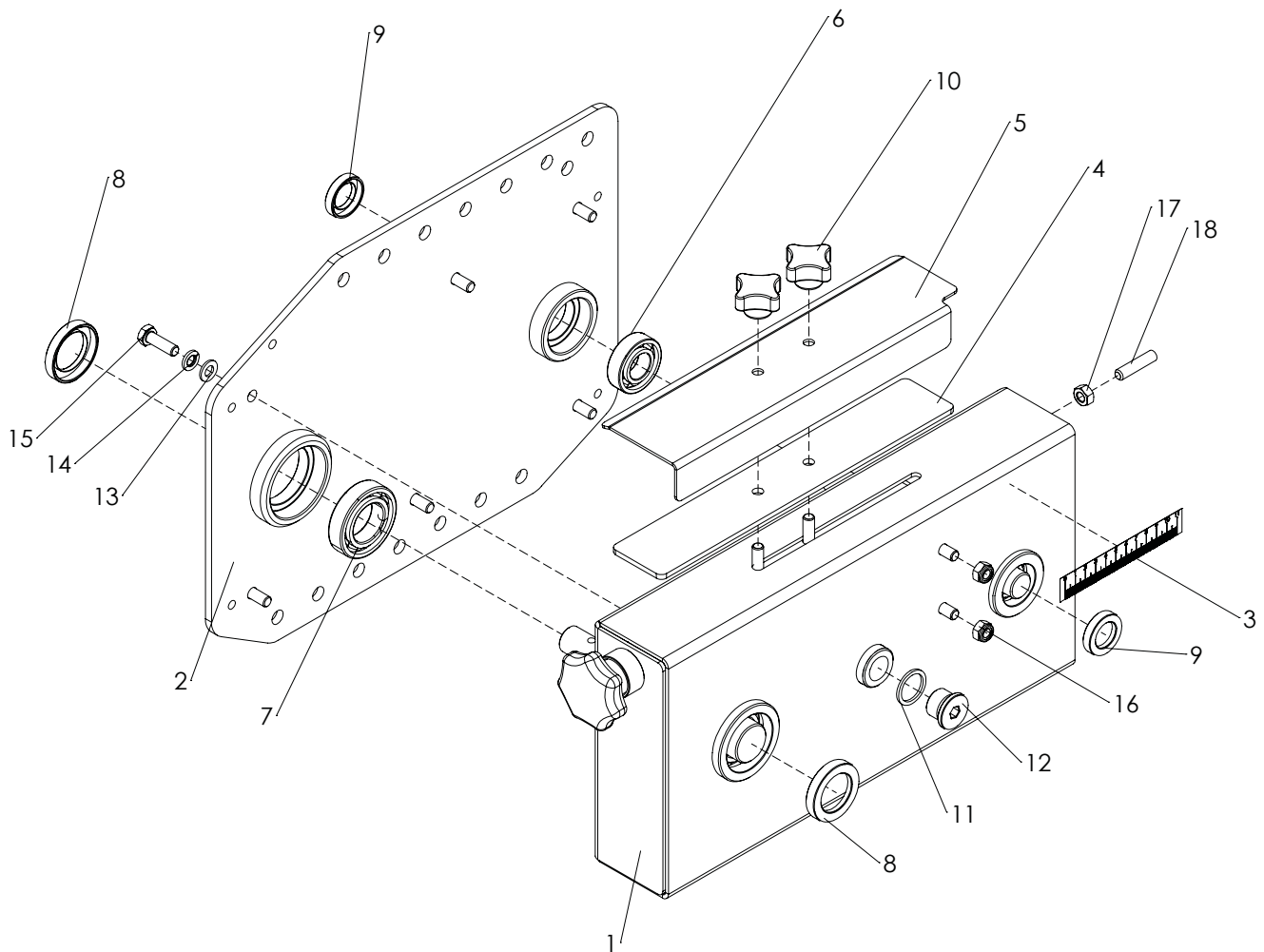
1. Put sealing paste (Loctite 5970) on the gearbox housing according to the closed line as shown on the pictures below.
2. Make sure to put sealing paste around the threaded holes.
3. Make sure to clean the edges from excess sealant.



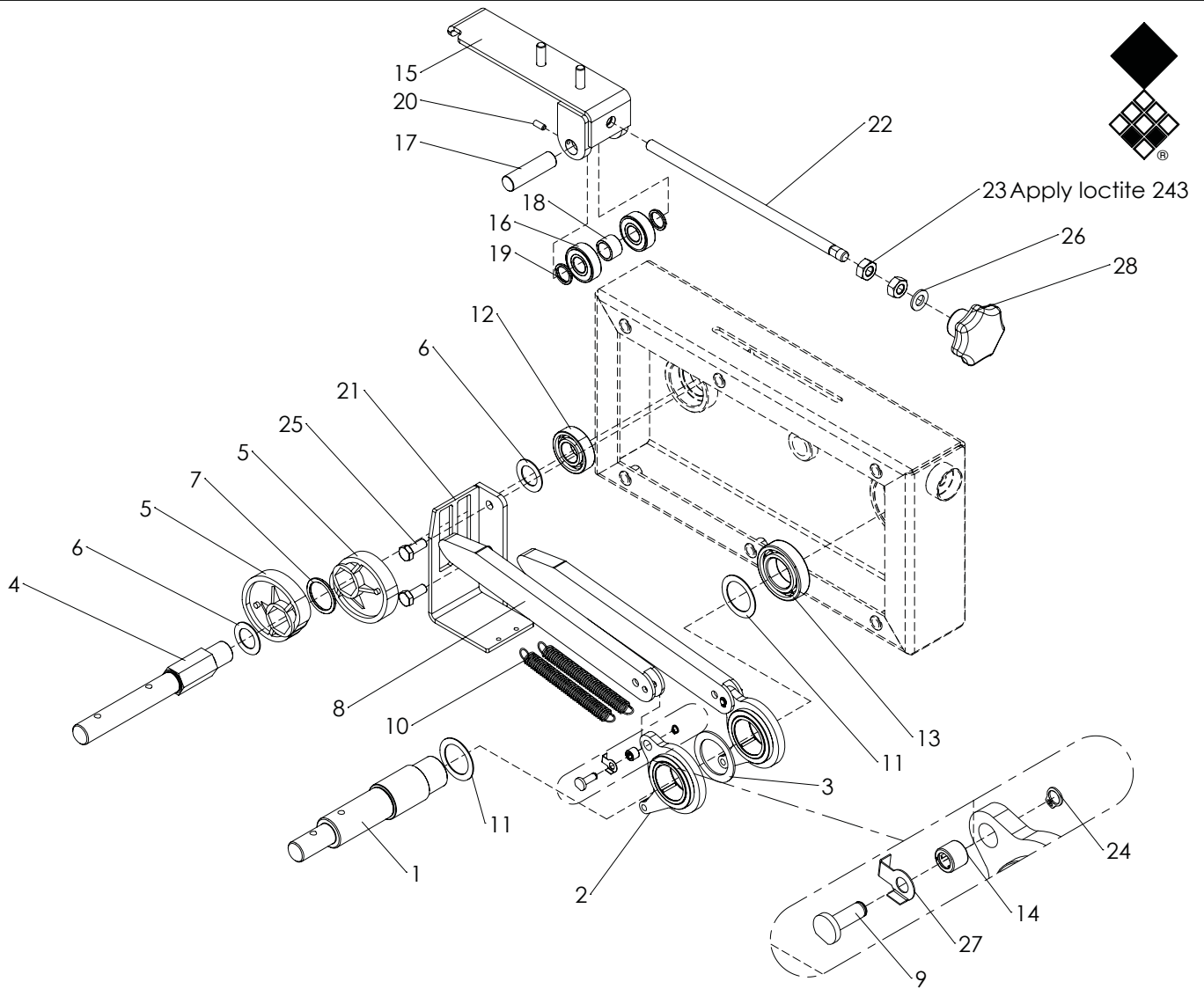
Apply Loctite 5970 (acid free sealing paste)



Apply Loctite 5970 (acid free sealing paste)



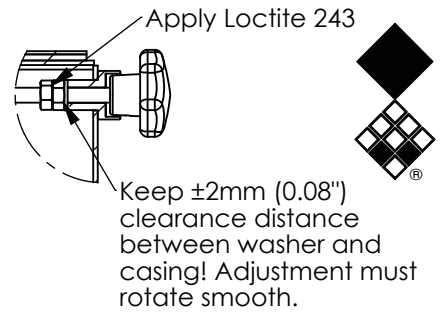
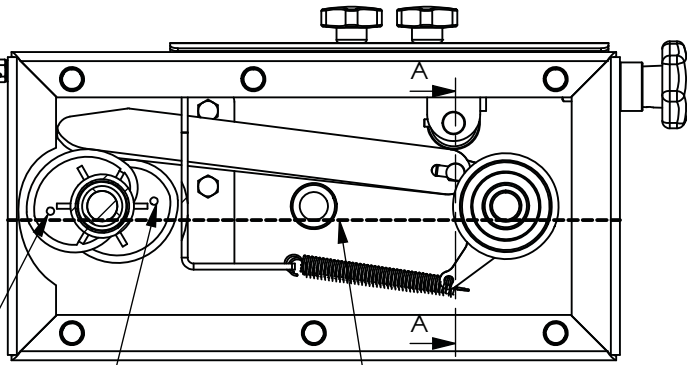
ITEM	PART NUMBER	DESCRIPTION	REMARKS	QUA
1	470.034.052	Gearbox housing		1
2	470.064.004	Gearbox lid		1
3	922.340.014	Gauge decall		1
4	444.032.900	Slider seal		1
5	468.022.900	Indicator		1
6	711.200.120	Bearing 6004		1
7	711.300.132	Bearing 6006		1
8	762.300.080	Oil seal 30-45-8		2
9	762.200.070	Oil seal 20-32-7		2
10	836.080.402	Closed Knob M8 - Din 6335		2
11	874.210.020	Copper washer 1_2		1
12	549.210.200	Blind plug G1/2		1
13	864.080.030	Washer M8 - ISO 7089		6
14	866.080.020	Spring Washer M8 - DIN 127		6
15	804.080.250	Bolt M8 x 25 - ISO 4017		6
16	830.080.080	Self Lock Nut M8 - ISO 10511		2
17	826.080.080	Nut M8 - DIN 934		1
18	818.080.350	Set screw M8x35 - DIN 913		1
	623.246.405	Gearbox complete		



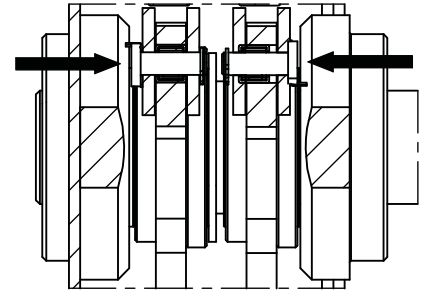
ITEM	PART NUMBER	DESCRIPTION	REMARKS	QUA
1	422.351.382	Shaft		1
2	478.019.101	Pivot point		1
3	444.020.500	Washer		1
4	422.242.020	Shaft		1
5	444.200.730	Excenter		2
6	868.032.100	Shim Ø20xØ32x1.0 DIN988	Quantity depending on clearance	
7	406.280.030	Spacer		1
8	464.152.600	Swing arm		2
9	418.060.190	Pin		2
10	575.010.800	Spring		2
11	868.042.100	Shim Ø30xØ42x1.0 DIN988	Quantity depending on clearance	
12	711.200.120	Bearing 6004		1
13	711.300.132	Bearing 6006		1
14	721.060.080	Bearing HK0608		2
15	470.041.980	Slider bracket		1
16	713.150.110	Bearing 6202-LLU		2
17	414.150.550	Shaft		1
18	406.150.132	Bush		1
19	406.150.020	Bush		2
20	818.050.120	Set screw M5 x 12 - DIN 913		2
21	470.041.190	Guide		1
22	852.102.500	Threaded rod M10x250		1
23	826.100.100	Nut M10 - DIN 934		2
24	870.006.070	Circlip d=6 - DIN 471		2
25	804.080.200	Bolt M8 x 20 - ISO 4017		2
26	864.100.030	Washer M10 - ISO 7089		1
27	874.060.240	Lock washer		2
28	836.100.630	Knob M10 with set screw		1

**Timing, Spindle adjustment and Grease level**

Adjust till max. output is 4:1



**SECTION A-A**  
Place pins from correct side and fold lock plate.

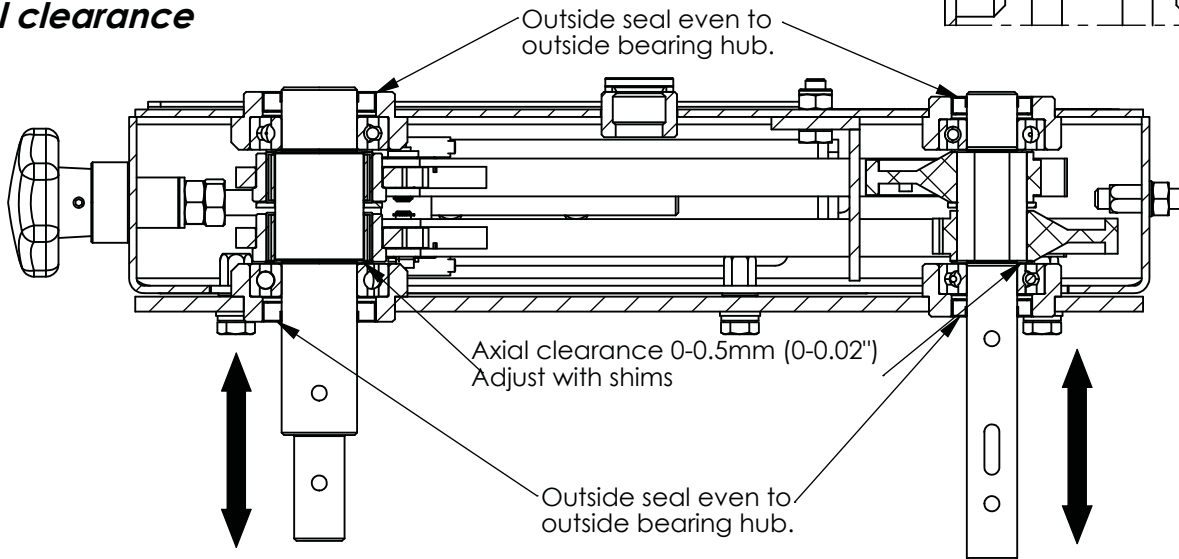


Warning! Make sure the excenters are positioned correct: Fill gearbox with ±2.8kg (6.17lbs.) EP0 grease Fill till level line (Bottom level plug)

- The nodge has to be faced outwards.
- Timing: 180° shifted from each other.

If not correctly installed a shocked rotation will occur at the output shaft.

**Axial clearance**



**Sealing plan**

1. Place sealing paste (Loctite 5970) on gearbox housing as shown in the pictures below. When the guide (1) is removed also apply sealant to the bolts.
2. Place gearbox lid on gearbox housing.
3. Fill bolt holes with silicone sealing before mounting the bolts of the gearbox lid.
4. Make sure to clean the edges of excess sealant.

